

# A Dual UPQC to Mitigate Sag/Swell, Interruption, and Harmonics on Three Phase Low Voltage Distribution System

*By Amirullah Amirullah*

# A Dual UPQC to Mitigate Sag/Swell, Interruption, and Harmonics on Three Phase Low Voltage Distribution System

2 Amirullah

Electrical Engineering Study Program  
Faculty of Engineering  
Universitas Bhayangkara Surabaya  
Surabaya, Indonesia  
amirullah@ubhara.ac.id

Adiananda

Electrical Engineering Study Program  
Faculty of Engineering  
Universitas Bhayangkara Surabaya  
Surabaya, Indonesia  
adiananda@ubhara.ac.id

Onto 4. no Penangsang

Department of Electrical Engineering  
Faculty of Intelligent Electrical and Informatics Technology  
Institut Teknologi Sepuluh Nopember  
Surabaya, Indonesia  
ontosenop@ee.its.ac.id, Zenno\_379@yahoo.com

A 4. Soeprijanto

Department of Electrical Engineering  
Faculty of Intelligent Electrical and Informatics Technology  
Institut Teknologi Sepuluh Nopember  
Surabaya, Indonesia  
adisup@ee.its.ac.id

**Abstract**—The Unified Power Quality Conditioner (UPQC) is a combination of a series active filter (SeAF) and a shunt active filter (ShAF) connected in parallel by a DC link capacitor. This device can mitigate power quality (PQ) problems i.e. sag/swell, harmonics, and unbalance on the source and load bus of three-phase three-wire (3P3W) on low voltage distribution systems simultaneously. The disadvantage of UPQC is that it is unable to overcome the voltage interruption so that the source can not deliver power to the load. This paper proposes a dual UPQC model to overcome the voltage interruption on the source bus so that the load bus continues to get power supply. There are six disturbance cases i.e. sinusoidal supply-sag-non-linear load (S-Sag-NL-L), sinusoidal supply-swell-NL-L (S-Swell-NL-L), sinusoidal-interruption-NL-L (S-Inter-NL-L), distorted supply-sag-NL-L load (D-Sag-NL-L), distorted supply-swell-NL-L (D-Swell-NL-L), and distorted supply-interruption-NL-L (D-Inter-NL-L). The proportional Integral (PI) method is used to control the SeAF and the ShAF in the dual UPQC circuit model. The simulation results show that in the D-Inter-NL-L case, a Dual UPQC model can maintain a load voltage magnitude of 266.60 V (voltage drop only of 14%), higher compared to a Single UPQC model of 173.97 V (voltage drop of 43.88%). In the same case, a dual UPQC model is capable of resulting in an average total harmonics distortion (THD) of load voltage of 10.10%, lower compared to a single UPQC model of 26.70%.

**Keywords**—Dual/Single UPQC, Sag/Swell, Interruption, Harmonics.

## I. INTRODUCTION

In recent decades, the use of NL-Ls by customers has contributed to a decrease in the PQ in power system, causing current distortion in the load buses. On the other hand, the presence of sensitive loads and voltage distortion on the source bus also causes several voltage disturbances, thereby also causing a decrease in voltage. To solve the problem of worsening PQ due to the use of sensitive loads/NL-Ls and voltage distortion, a single UPQC is proposed [1]. The single UPQC consists of a SeAF and a ShAF connected in parallel via a DC-link capacitor and serves to mitigate a number of PQ problems on the source and load sides simultaneously [2]. The SeAF functions to reduce several of voltage disturbances on

the source bus. Meanwhile, the ShAF functions to overcome several current quality problems on the load bus [3].

To anticipate the failure of both inverters in a single UPQC circuit, a dual UPQC model was developed. The advantage of a dual UPQC is that it has a more reliable inverter circuit structure and control because if there is a disturbance in one of the inverters, the UPQC system still able to operate normally [4]. The dual or interline UPQC consists of two active filters, namely SeAF and ShAF (parallel active filters). Different from the single UPQC, the dual UPQC has a SeAF which is controlled as a sinusoidal current source, and a ShAF which is controlled as a sinusoidal voltage source. Thus the dual UPQC with pulse width modulation (PWM) control is controlled using a sinusoidal reference, in contrast to a single UPQC which is still controlled using a non-sinusoidal reference.

Implementation of dual UPQC circuit and control, to improve PQ on the source and load side of the low voltage distribution system has been discussed in several papers. The simplification technique UPQC control has been proposed in [5] and developed on the ABC reference frame using the sinusoidal reference synchronization theory. In [6], a comparison of two different controls has been carried out to generate the PWM reference signal using the  $\alpha$ - $\beta$  and d-q reference frames, respectively. The comparison of the operating performance of single UPQC and dual UPQC in a 3 phase 3 wire (3P3W) system under static and dynamic disturbances has been carried out through simulations [7] and experiments [8]. The improvement of PQ using dual UPQC under conditions of sudden load changes has been done by [9]. The study, analysis, and implementation of the dual UPQC model that can be connected to a 3P3W or three-phase four-wire (3P4W) [10] and 3P4W distribution system [11] with PI control have been applied. The analysis to balance reactive power between SeAF and ShAF on a dual UPQC using power angle control has been carried out in [12]. The weakness of the UPQC is that it is unable to overcome the disturbance caused by interruption voltage on the source bus so that the load bus experiences blackouts [3].

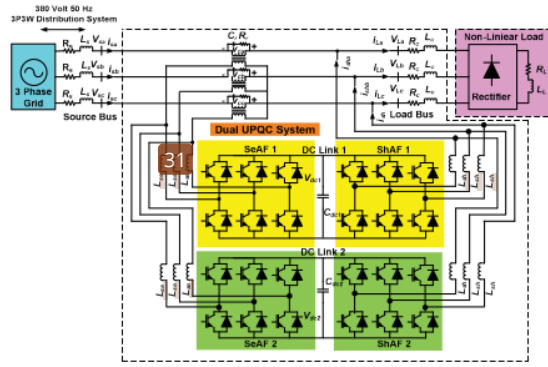


Fig. 1 Proposed model of a dual UPQC connected to 3P3W system

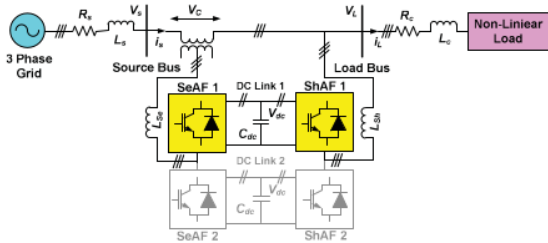


Fig. 2. Model of a single UPQC in single phase system

The paper proposes a dual UPQC model to overcome interruption voltage in the source bus so that the load bus still gets power supply. To provide a performance of the proposed model, the simulation parameter results of the dual UPQC model are further validated with a single UPQC model.

## II. RESEARCH METHOD

### A. Proposed Method

This research aims to mitigate interruption voltage, sag/swell voltage, and harmonics in the 3P3W distribution system using a dual UPQC model. This power electronic device is used to overcome the weakness of a single UPQC in maintaining the magnitude of load voltage so that the load bus is still supplied with power if interruption voltage happens on the source bus. The dual UPQC circuit is located between the load bus and connected to the source bus (PCC) via a 380 V (L-L) low-voltage distribution line with a frequency of 50 Hz. The PI controller is used in a dual UPQC circuit model. There are six disturbance cases i.e. (1) S-Swell-NL-L, (2) S-Sag-NL-L, (3) S-Inter-NL-L, (4) D-Swell-NL-L, (5) D-Sag-NL-L, and (6) D-Inter-NL-L.

In case 1, the system is connected to a NL-L and the sinusoidal source runs into a swell voltage of 50%. In case 2, the system is connected to a NL-L and the sinusoidal source runs into a sag voltage of 50%. In case 3, the system is connected to a NL-L and the sinusoidal source runs into an interruption voltage of 100%. In case 4, the system is connected to a NL-L, the source generates 5<sup>th</sup> and 7<sup>th</sup> odd-order harmonic components with individual harmonic distortion each of 5% and 2%, as well as runs into a swell voltage of 50%. In case 5, the system is connected to a NL-L,

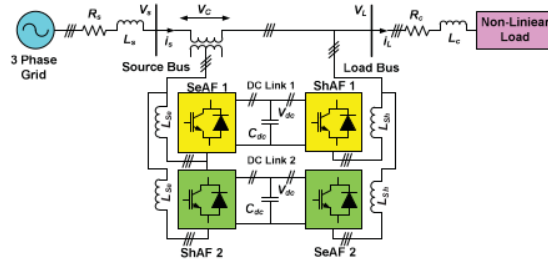


Fig. 3. Model of a dual UPQC in single phase system.

the source generates 5<sup>th</sup> and 7<sup>th</sup> odd-order harmonic components with individual harmonic distortion values each of 5% and 2%, as well as runs into a sag voltage of 50%. In case 6, the system is connected to a NL-L, the source generates 5<sup>th</sup> and 7<sup>th</sup> odd-order harmonic components with individual harmonic distortion each of 5% and 2%, as well as runs into interruption voltage of 100%. The total simulation time for all disturbance cases is equal to 0.7 s with a disturbance duration of 0.3 s between  $t = 0.2$  s to  $t = 0.5$  s.

The mitigation analysis of PQ problems in this paper i.e. improve load voltage magnitude and reduce harmonics due to interruption voltage, sag/swell voltage, and source voltage harmonic distortion, as well as reduce source current harmonics due to NL-Ls. Finally, the simulation results of all parameters in a dual UPQC model are then validated with a single UPQC model to provide an overview of the performance advantages of the proposed model. Figure 1 shows the proposed model of a dual UPQC connected to a 3P3W distribution system. Figure 2 and Figure 3 show the proposed model of a single and a dual UPQC in a single-phase system. The parameter of the proposed model is shown in Appendix I.

### B. Control of Dual Series Active Filter

The SeAF control on a single UPQC has been fully described in [13]. Based on this circuit model, the SeAF control circuit on the dual UPQC is arranged by duplicating a single SeAF control circuit while still using one series of three-phase series transformers. Then based on this procedure, the authors further propose complete control of the dual UPQC whose model is shown in Figure 4. The distorted source voltage is calculated and divided by the base input voltage peak amplitude  $V_m$ , as described in Eq. (1) [14].

$$V_m = \sqrt{\frac{2}{3} (V_{sa}^2 + V_{sb}^2 + V_{sc}^2)} \quad (1)$$

### C. Control of Dual Shunt Active Filter

The ShAF control on a single UPQC has been described in detail in [13]. Based on this circuit model, the dual UPQC ShAF control circuit is arranged by duplicating the control circuit on a single ShAF. Using the "p-q" method, the voltages and currents can be transformed into the  $\alpha - \beta$ . The axis as indicated in Eq. (2) and Eq. (3) [15].

$$\begin{bmatrix} v_\alpha \\ v_\beta \end{bmatrix} = \begin{bmatrix} 1 & -1/2 & -1/2 \\ 0 & \sqrt{3}/2 & -\sqrt{3}/2 \end{bmatrix} \begin{bmatrix} V_a \\ V_b \\ V_c \end{bmatrix} \quad (2)$$

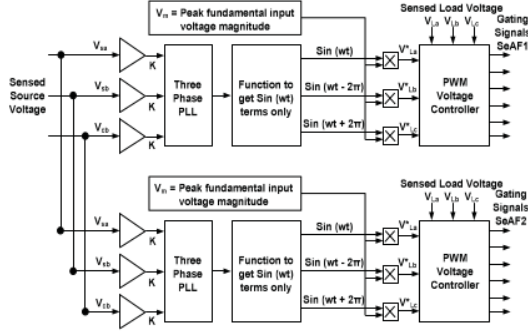


Fig. 4 Dual series active filter control

$$\begin{bmatrix} i_a \\ i_b \\ i_c \end{bmatrix} = \begin{bmatrix} 1 & -1/2 & -1/2 \\ 0 & \sqrt{3}/2 & -\sqrt{3}/2 \end{bmatrix} \begin{bmatrix} i_\alpha \\ i_\beta \end{bmatrix} \quad (3)$$

The computation of true power ( $p$ ) and imaginary power ( $q$ ) is presented in Eq. (4) [14].

$$\begin{bmatrix} p \\ q \end{bmatrix} = \begin{bmatrix} v_\alpha & v_\beta \\ -v_\beta & v_\alpha \end{bmatrix} \begin{bmatrix} i_\alpha \\ i_\beta \end{bmatrix} \quad (4)$$

$$p = \bar{p} + \tilde{p} ; q = \bar{q} + \tilde{q} \quad (5)$$

The total imaginary power ( $q$ ) and fluctuating component of true power ( $\tilde{p}$ ) are chosen as power references and current references and are used by using Eq. (5) to balance the harmonics and reactive power [16].

$$\begin{bmatrix} i_{ca}^* \\ i_{cb}^* \end{bmatrix} = \frac{1}{v_\alpha^2 + v_\beta^2} \begin{bmatrix} v_\alpha & v_\beta \\ v_\beta & -v_\alpha \end{bmatrix} \begin{bmatrix} -\tilde{p} + \bar{p}_{loss} \\ -q \end{bmatrix} \quad (6)$$

The authors propose a model of a dual ShAF control presented in Figure 5.

The  $\bar{p}_{loss}$  parameter is collected from the voltage controller and is used as average true power. The compensation current ( $i_{ca}^*, i_{cb}^*$ ) is used to fulfill load power consumption as presented in Eq. (6). The current is stated in coordinates  $\alpha - \beta$ . The current compensation is needed to gain source current in each phase by using Eq. (7). The source current in each phase ( $i_{sa}^*, i_{sb}^*, i_{sc}^*$ ) is stated in the ABC coordinates gained from the compensation current in  $\alpha\beta$  axis and is expressed in Eq. 7 [16].

$$\begin{bmatrix} i_{sa}^* \\ i_{sb}^* \\ i_{sc}^* \end{bmatrix} = \frac{1}{\sqrt{3}} \begin{bmatrix} 1 & 0 \\ -1/2 & \sqrt{3}/2 \\ -1/2 & -\sqrt{3}/2 \end{bmatrix} \begin{bmatrix} i_{ca}^* \\ i_{cb}^* \end{bmatrix} \quad (7)$$

To operate properly, the dual UPQC must have a minimum DC-link voltage ( $V_{dc}$ ) stated in Eq. 8 [17]:

$$V_{dc} = \frac{2\sqrt{2}V_{LL}}{\sqrt{3}m} \quad (8)$$

Using the modulation value ( $m$ ) equal to 1 and the line to line source voltage ( $V_{LL}$ ) of 380 V,  $V_{dc}$  was calculated to be equal to 10.54 V and set at 650 V. The dual ShAF input indicated in Fig. 6 is DC voltage 1 ( $V_{dc1}$ ) and reference of DC

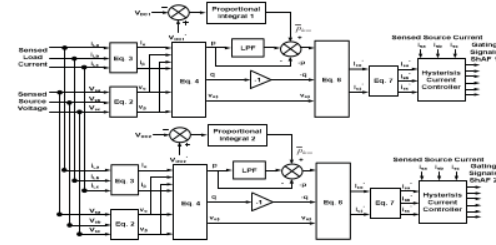


Fig. 5. Dual shunt active filter control

voltage 1 ( $V_{dc1}$ ) as well as DC voltage 2 ( $V_{dc2}$ ) and reference of DC voltage 2 ( $V_{dc2}^*$ ), while  $P_{loss}$  is selected as the output using the PI controllers 1 and 2. Furthermore,  $P_{loss}$  will be an input variable to generate the reference source currents ( $i_{sa}^*, i_{sb}^*, i_{sc}^*$ ). Then, the reference source currents output is compared with the current source ( $i_{sa}, i_{sb}, i_{sc}$ ) by hysteresis current regulator to result in a trigger signal in the IGBT circuit of ShAF 1 and ShAF 2. In this paper, the PI controllers 1 and 2 are proposed as the control algorithms of the DC voltages 1 and 2 on ShAF 1 and ShAF 2, respectively.

#### D. Percentage of Sag/Swell and Interruption Voltage

The standard of monitoring sag/swell and interruption voltage as a part of PQ parameters is IEEE 1159-1995 [18]. This standard presents a definition and table of voltage sag/voltage and interruption base on categories (instantaneous, momentary, and temporary) typical duration, and typical magnitude. The percentage of disturbances i.e. sag/swell and interruption voltage are proposed by authors in Eq. (9) below:

$$\text{Disturb Voltage (\%)} = \frac{|V_{pre\_disturb} - V_{disturb}|}{V_{pre\_disturb}} \quad (9)$$

## II. RESULT AND DISCUSSION

The proposed model analysis is carried out by set two UPQC models, i.e. single UPQC and dual UPQC. There are six disturbance cases in each UPQC i.e. (1) S-Swell-NL-L, (2) S-Sag-NL-L, (3) S-Inter-NL-L, (4) D-Swell-NL-L, (5) D-Sag-NL-L, and (6) D-Inter-NL-L. Using Matlab/Simulink, the model is run based on selected cases to get the magnitude of source voltages ( $V_{sa}, V_{sb}, V_{sc}$ ), load voltages ( $V_{la}, V_{lb}, V_{lc}$ ), source currents ( $I_{sa}, I_{sb}, I_{sc}$ ), and load currents ( $I_{la}, I_{lb}, I_{lc}$ ) as well as their average values. Furthermore, THD of source voltage, THD of load voltage THD of source current, and THD of load current in each phase, and their average value are also determined based on the curves obtained previously. The total simulation period lasts 0.7 s with a duration of disturbance time between 0.2-0.5 s. The THD of voltage and current in each phase is determined in one cycle starting at  $t = 0.35$  s. Based on the load voltage value, then disturbance voltage percentage value (%) is obtained using equation (9), with a pre-disturbance voltage of 310 V. The simulation results of voltage and current magnitudes, THD of voltage and current, and percentage of load voltage disturbances in six cases are presented in Table 1, Table 2, (Appendix II) and Table 3 respectively. Figure 6 and Figure 7 (Appendix III) show the performance of a single UPQC and a dual UPQC respectively, in the D-Inter-NL-L case.



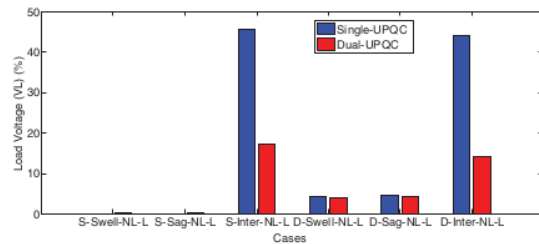


Fig. 8. Performance of the load voltage percentage between a Single-UPQC and a Dual-UPQC

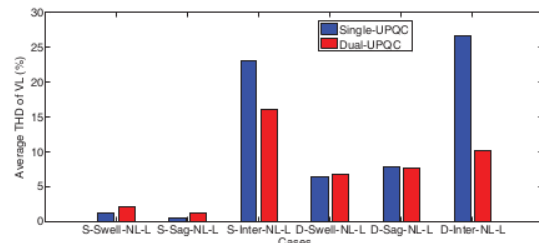


Fig. 9. Performance of the average load voltage harmonics between a Single-UPQC and a Dual-UPQC

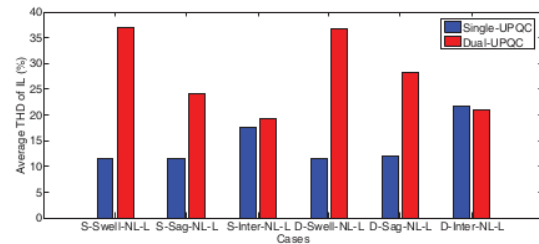


Fig. 10. Performance of the average source current harmonics between a Single-UPQC and a Dual-UPQC

Table 1 and Figure 8 show that in both S-Sag/Swell-NL-L and D-Sag/Swell-NL-L cases, the implementation of a dual UPQC model results in a slightly higher percentage of load voltage disturbance than a single UPQC model. In the D-Inter-NL-L case, a dual UPQC model is able to maintain a more stable load voltage of 266.60 V compared to a single UPQC model of 173.97 V. Table 3 and Figure 8 also show that in the D-Inter-NL-L case, a dual UPQC circuit is also capable of resulting in a smaller percentage of load voltage disturbance of 14%, compared to a single UPQC circuit of 43.88%. In this case, the SeAF circuit on a Dual UPQC with PI controller can inject a larger series power, so that it is also able to produce a higher load voltage and a lower percentage of load voltage disturbance than a single UPQC.

Table 2 and Figure 9 show that in both S-Sag/Swell-NL-L and D-Sag/Swell-NL-L fault cases, the implementation of a dual UPQC model results in a slightly higher average THD of the load voltage than a single UPQC model. In the D-Inter-NL-L case, a dual UPQC circuit can produce a much lower load voltage average THD of 10.10% compared to a single UPQC circuit of 26.70 %. In this case, the SeAF circuit on a dual UPQC with PI controller can inject a larger series compensation voltage, so that it is also able to reduce the harmonics content of load voltage and result in the average THD value is smaller than a single UPQC.

Table 2 and Figure 10 show that in S-Sag/Swell-NL-L and D-Sag/Swell-NL-L cases, the implementation of a dual UPQC model produces higher source current average THD than a single UPQC model. In the D-Inter-NL-L case, a dual UPQC circuit can produce a slightly lower source current average THD of 21.01% compared to a single UPQC circuit of 21.77%. In this case, the ShAF circuit on a dual UPQC with PI controller is able to inject a slightly larger shunt compensation current, so that it is also able to reduce the harmonics content of source current, and result in the average THD value is slightly smaller than a single UPQC.

#### IV. CONCLUSION

The implementation of UPQC to mitigate PQ problems i.e. sag/swell, interruption, and harmonics on the source and load bus of 3P3W on low voltage distribution system simultaneously has been presented. There are six disturbance cases i.e. S-Sag-NL-L, S-Swell-NL-L, S-Inter-NL-L, D-Sag-NL-L, D-Swell-NL-L, and D-Inter-NL-L. The PI method is used to control SeAF and ShAF in the dual UPQC circuit model. The simulation results show that in the D-Inter-NL-L case, a dual UPQC model is able to maintain a load voltage magnitude, higher compared to a single UPQC model. In the D-Inter-NL-L case, a dual UPQC circuit is also capable of resulting in a smaller percentage of load voltage disturbance compared to a single UPQC circuit. In the same case, a dual UPQC model is capable of resulting in an average THD of load voltage, lower compared to a single UPQC model. In the D-Inter-NL-L case, the percentage of load voltage disturbance on a 3P3W system using a dual UPQC still has not reached the limit below 10 percent. The THD of load voltage and source current also still exceed the IEEE-519 standard. The implementation of renewable energy generators i.e. a photovoltaic and/or a wind turbine as well as advanced control based on artificial intelligence on ShAF circuits i.e. fuzzy logic, neural network, or ANFIS, then can be selected as future work to overcome this problem.

#### ACKNOWLEDGMENTS

This research was one of the outputs of the 2nd year Fundamental Research and funded by DRPM, Deputy for Strengthening Research and Development, Kemenristek/BRIN, Republic of Indonesia. It was implemented based on the Decree Letter Number: B/87/E3/RA.00/2020 on 8 January 2020 and Second Amendment Contract Number: 008/SP2H/AMD/LT/MULTI/L7/2020 on 17 March 2020, Second Amendment Contract Number: 048/VI/AMD/LPPM/2020/UBHARA on 11 June 2020.

#### REFERENCES

- [1] B. Han, B. Hae, H. Kim, and S. Back, "Combined Operation of UPQC With Distributed Generation", IEEE Transactions on Power Delivery, Vol. 21, No. 1, pp. 330-338, 2006.
- [2] B.W. Franca and M. Aredes, "Comparisons between The UPQC and Its Dual Topology (iUPQC) in Dynamic Response and Steady-State", IECON-2011-37th Annual Conference of the IEEE Industrial Electronics Society, Melbourne, VIC, Australia, 7-10 Nov. 2011.
- [3] V. Khadkikar, "Enhancing Electric PQ UPQC: A Comprehensive Overview", IEEE Transactions on Power Electronics, Vol. 27, No. 5, pp. 2284-2297, 2012.
- [4] V. F. Pires, D. Foito, A. Cordeiro, and J. F. Martins, "PV Generators Combined with UPQC Based on a Dual Converter Structure", IEEE 26th International Symposium on Industrial Electronics (ISIE), Edinburgh-UK, 19-21 June 2017.

- [5] R.J. Millnitz dos Santos, J.C. da Cunha, and M. Mezaroba, "A Simplified Control Technique for a Dual Unified PQ Conditioner, IEEE Transactions on Industrial Electronics, Vol. 61, No. 11, November 2014, pp. 5851-5860.
- [6] B.W. Franca, L.F. da Silva, and M. Aredes, "Comparison between Alpha-Beta and DQ-PI Controller Applied to IUPQC Operation", XI Brazilian Power Electronics Conference, Praiaamar, Brazil 11-15 September 2011.
- [7] B.W. Franca, L.F. da Silva, and M.A. Aredes, "An Improved iUPQC Controller to Provide Additional Grid-Voltage Regulation as a STATCOM", IEEE Transactions on Industrial Electronics, Volume: 62, Issue: 3, 2015, pp. 1-8.
- [8] S.A. Oliveira da Silva, L.B.G. Campanhol, G.M. Pelz, and V. de Souza "Comparative Performance Analysis Involving a Three-Phase UPQC Operating with Conventional and Dual/Inverted Power-Line Conditioning Strategies", IEEE Transactions on Power Electronics, Volume: 35, Issue: 11, 2020.
- [9] N.S. Borse and S.M. Shembekar, "PQ Improvement using Dual Topology of UPQC", International Conference on Global Trends in Signal Processing, Information Computing and Communication (ICGTSPICC), Jalgaon, India, 22-24 Dec. 2016, pp. 428-431.
- [10] R.A. Modesto and S.A. Oliveira da Silva, "Versatile Unified PQ Conditioner Applied to Three-Phase Four-Wire Distribution Systems Using a Dual Control Strategy", IEEE Transactions on Power Electronics, Volume: 31, Issue: 8, 2016, pp. 1-12.
- [11] R.A. Modesto, S.A. Oliveira da Silva, A.A. de Oliveira Júnior, "PQ Improvement using a Dual Unified PQ Conditioner/Uninterruptible Power Supply in Three-Phase Four-Wire Systems" IET Power Electronics, Volume: 8, Issue: 9, 2015, pp. 1595-1605.
- [12] S.M. Fagundes and M. Mezaroba, "Reactive Power Flow Control of a Dual Unified PQ Conditioner", IECON 2016 - 42nd Annual Conference of the IEEE Industrial Electronics Society, Florence, Italy, 23-26 Oct. 2016, pp. 1156-1161.
- [13] Aminullah, A. Soeprijanto, Adiananda, O. Penangsang, "Power Transfer Analysis Using UPQC-PV System Under Sag and Interruption With Variable Irradiance", 2020 International Conference on Smart Technology and Applications (ICoSTA), Surabaya, Indonesia, 20-20 Feb. 2020.
- [14] Y. Bouzelata, E. Kurt, R. Chenni, and N. Altin, "Design and Simulation of UPQC Fed by Solar Energy", International Journal of Hydrogen Energy, Vol. 40, pp. 15267-15277, 2015.
- [15] S.Y. Kamble and M.M. Waware, "UPQC for PQ Improvement", Proceeding of International Multi Conference on Automation Computer, Communication, Control, and Computer Sensing (iMac4s), Kottayam, India, pp. 432-437, 2013.
- [16] M. Hembram and A.K. Tudu, "Mitigation of PQ Problems Using UPQC, Proceeding of Third International Conference on Computer, Communication, Control, and Information Technology (C3IT), pp.1-5, Hooghly, India, 2015.
- [17] Y. Pal, A. Swarup, and B. Singh, "A Comparative Analysis of Different Magnetic Support Three Phase Four Wire UPQCs - A Simulation Study", Electrical Power and Energy System, Vol. 47 pp. 437-447, 2013.
- [18] 1159-1995 Standards-IEEE Recommended Practice for Monitoring Electric PQ, 29.240.01-Power Transmission and Distribution Networks in General, 30 Nov. 1995, pp. 1-70.

## APPENDIX I

The 3P3W source: root means square voltage 380 V (line to line), 50 Hz, line impedance:  $R_S = 0.1 \text{ ohm}$ ,  $L_S = 15 \text{ mH}$ ; SeAF and ShAF: series inductance  $L_{Se} = 0.015 \text{ mH}$ ; shunt inductance  $L_{Sh} = 15 \text{ mH}$ ; compensation transformer: rating 10 kVA, 50 Hz, transformation ratio ( $N_1/N_2 = 1:1$ ); NL-L: resistance  $R_L = 60 \text{ ohm}$ , inductance  $L_L = 0.15 \text{ mH}$ , load impedance  $R_C = 0.4 \text{ ohm}$  and  $L_C = 15 \text{ mH}$ ; DC-link 1 and 2: DC voltage 1 and 2  $V_{dc} = 650 \text{ volt}$  and capacitance 1 and 2  $C_{dc} = 3000 \text{ }\mu\text{F}$ ; PI controller 1 and 2:  $K_P = 0.2$ ,  $K_I = 1.5$ ; input:  $V_{dc-error}$  and  $\Delta V_{dc-error}$ ; output: power losses ( $P_{loss}$ ).

## APPENDIX II

TABLE I. MAGNITUDE OF VOLTAGE AND CURRENT USING SINGLE UPQC AND DUAL UPQC ON SIX DISTURBANCE CASES

Case	Source Voltage $V_s$ (V)				Load Voltage $V_L$ (V)				Source Current $I_s$ (A)				Load Current $I_L$ (A)			
	A	B	C	Avg	A	B	C	Avg	A	B	C	Avg	A	B	C	Avg
<b>Single UPQC</b>																
1	464.4	464.6	464.6	<b>464.53</b>	310.0	309.9	309.9	<b>309.93</b>	8.381	8.382	8.379	<b>8.381</b>	8.586	8.584	8.585	<b>8.585</b>
2	153.4	153.4	153.4	<b>153.40</b>	310.1	310.1	310.1	<b>310.10</b>	16.61	16.38	16.42	<b>16.470</b>	8.588	8.586	8.589	<b>8.588</b>
3	0.9984	0.8963	1.022	<b>0.970</b>	172.2	161.5	173.3	<b>169.00</b>	9.345	8.621	9.130	<b>9.032</b>	4.647	4.356	4.606	<b>4.536</b>
4	464.6	464.6	464.6	<b>464.60</b>	320.2	322.8	326.9	<b>323.30</b>	8.732	8.697	8.723	<b>8.717</b>	8.927	8.974	8.991	<b>8.964</b>
5	153.7	153.8	153.7	<b>153.73</b>	295.6	296.0	297.5	<b>296.37</b>	13.97	13.45	14.00	<b>13.807</b>	8.245	8.17	9.097	<b>8.504</b>
6	0.9641	1.136	0.8586	<b>0.990</b>	173.7	179.6	168.6	<b>173.97</b>	8.601	10.27	8.507	<b>9.126</b>	5.105	4.561	4.589	<b>4.752</b>
<b>Dual UPQC</b>																
1	464.8	464.8	464.8	<b>464.80</b>	310.4	310.4	310.5	<b>310.43</b>	10.45	10.46	10.44	<b>10.450</b>	8.605	8.604	8.604	<b>8.604</b>
2	154.1	154.1	154.1	<b>154.10</b>	309.4	309.5	309.4	<b>309.43</b>	13.84	13.9	13.92	<b>13.887</b>	8.567	8.557	8.574	<b>8.566</b>
3	1.728	1.634	1.868	<b>1.74</b>	256.5	245	268.1	<b>256.53</b>	16.61	15.42	19.94	<b>17.323</b>	7.323	6.8	7.192	<b>7.105</b>
4	464.8	464.8	464.8	<b>464.80</b>	318.9	321.9	325.9	<b>322.23</b>	10.97	10.86	10.92	<b>10.917</b>	8.916	8.934	8.934	<b>8.928</b>
5	154.3	154.3	154.2	<b>154.27</b>	297.3	299	295.6	<b>297.30</b>	12.12	12.68	12.68	<b>12.493</b>	8.286	8.342	8.098	<b>8.242</b>
6	1.404	1.473	1.621	<b>1.50</b>	266.4	267.1	266.3	<b>266.60</b>	12.66	13.27	16.71	<b>14.213</b>	7.018	7.441	7.365	<b>7.275</b>

TABLE II. THD OF VOLTAGE AND CURRENT USING SINGLE UPQC AND DUAL UPQC ON SIX DISTURBANCE CASES

Case	Source Voltage THD (%)				Load Voltage THD (%)				Source Current THD (%)				Load Current THD (%)			
	A	B	C	Avg	A	B	C	Avg	A	B	C	Avg	A	B	C	Avg
<b>Single UPQC</b>																
1	0.79	0.78	0.79	<b>0.79</b>	1.24	1.23	1.24	<b>1.24</b>	11.63	11.57	11.57	<b>11.59</b>	22.30	22.30	22.30	<b>22.30</b>
2	0.98	0.98	0.98	<b>0.98</b>	0.49	0.49	0.48	<b>0.49</b>	11.68	11.68	11.59	<b>11.65</b>	22.28	22.29	22.28	<b>22.28</b>
3	83.18	109.82	87.01	<b>93.34</b>	23.84	24.37	21.02	<b>23.08</b>	20.66	19.45	12.23	<b>17.45</b>	26.84	21.48	17.66	<b>21.99</b>
4	3.63	3.67	3.71	<b>3.67</b>	4.90	6.42	7.69	<b>6.34</b>	11.63	11.42	11.71	<b>11.59</b>	22.46	21.82	22.47	<b>22.25</b>
5	11.07	10.9	10.76	<b>10.91</b>	8.41	7.80	7.09	<b>7.77</b>	11.14	12.93	11.76	<b>11.94</b>	21.76	23.42	21.77	<b>22.32</b>
6	1756.97	1463	1917	<b>1712.32</b>	21.53	31.74	26.82	<b>26.70</b>	17.16	21.84	26.31	<b>21.77</b>	24.96	31.51	24.62	<b>27.03</b>
<b>Dual UPQC</b>																
1	1.35	1.36	1.36	<b>1.36</b>	2.06	2.08	2.07	<b>2.07</b>	36.9	36.91	37.09	<b>36.97</b>	22.36	22.35	22.37	<b>22.36</b>
2	2.47	2.44	2.49	<b>2.47</b>	1.24	1.22	1.26	<b>1.24</b>	24.07	23.98	24.14	<b>24.06</b>	22.36	22.35	22.38	<b>22.36</b>
3	147.28	154.6	132.19	<b>144.69</b>	16.53	13.1	18.56	<b>16.06</b>	21.00	16.69	19.94	<b>19.21</b>	24.30	22.91	22.82	<b>23.34</b>
4	3.68	3.82	3.98	<b>3.83</b>	5.36	6.55	8.16	<b>6.69</b>	36.71	36.46	37.11	<b>36.76</b>	22.40	22.17	22.54	<b>22.37</b>
5	10.87	10.97	11.64	<b>11.16</b>	6.92	7.12	8.86	<b>7.63</b>	28.85	26.10	29.88	<b>28.28</b>	22.15	23.19	23.14	<b>22.83</b>
6	1211.59	1139.13	1053.34	<b>1134.69</b>	11.21	11.64	7.45	<b>10.10</b>	24.82	21.50	16.71	<b>21.01</b>	22.07	22.65	22.13	<b>22.28</b>

# APPENDIX III

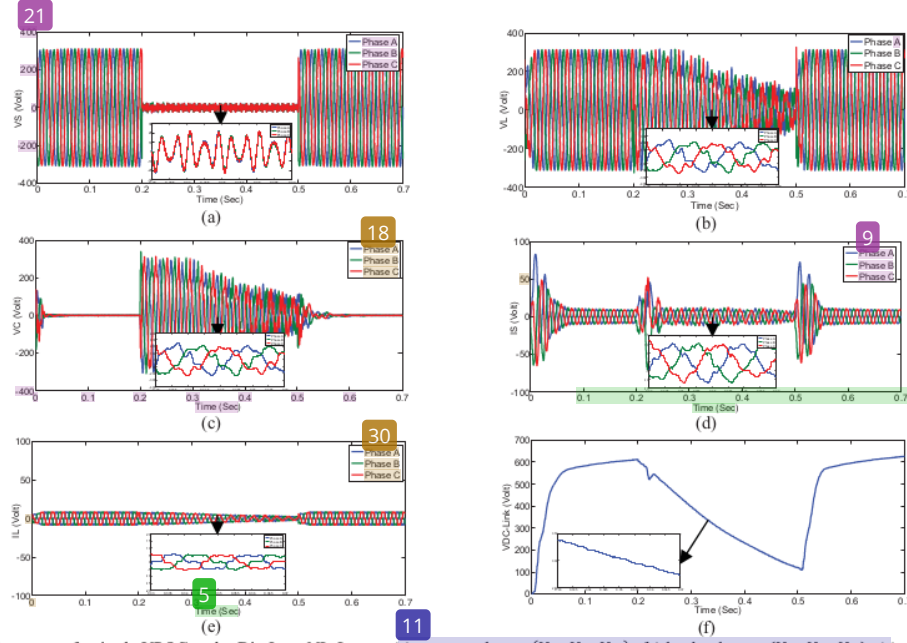


Fig. 6. Performance of a single UPQC under Dis-Inter-NL-L case: (a) source voltages ( $V_{sa}, V_{sb}, V_{sc}$ ); (b) load voltages ( $V_{La}, V_{Lb}, V_{Lc}$ ); (c) compensation voltages ( $V_{ca}, V_{cb}, V_{cc}$ ); (d) source currents ( $I_{sa}, I_{sb}, I_{sc}$ ); load currents ( $I_{La}, I_{Lb}, I_{Lc}$ ); and DC-link voltage ( $V_{DC-Link}$ )

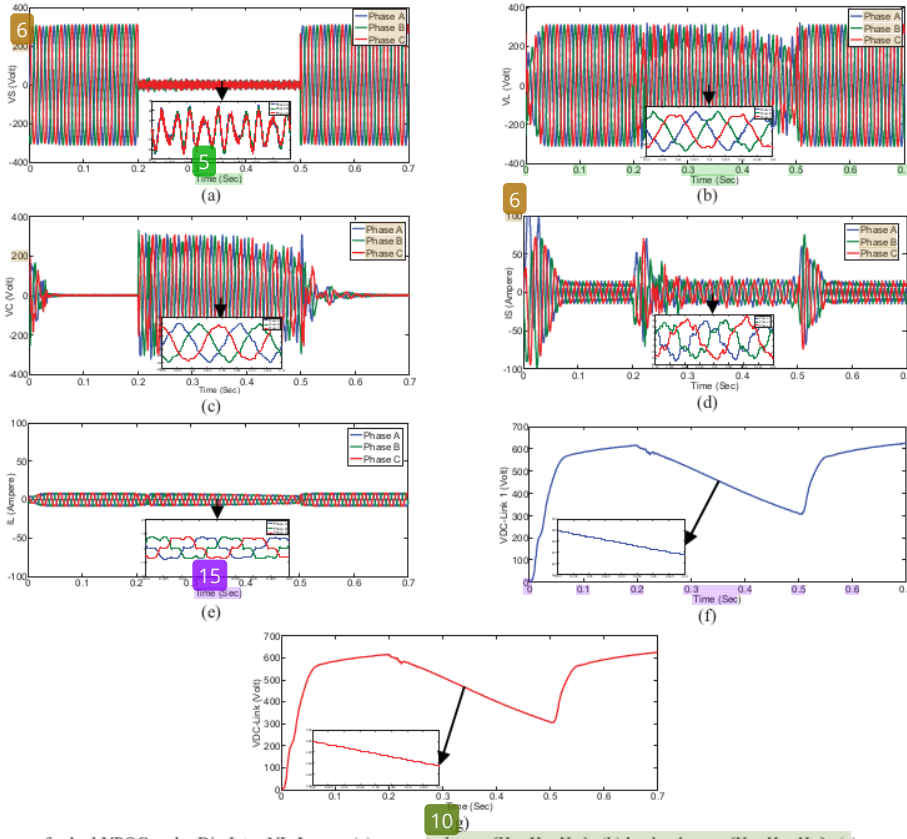


Fig. 7. Performance of a dual UPQC under Dis-Inter-NL-L case: (a) source voltages ( $V_{sa}, V_{sb}, V_{sc}$ ); (b) load voltages ( $V_{La}, V_{Lb}, V_{Lc}$ ); (c) compensation voltages ( $V_{ca}, V_{cb}, V_{cc}$ ); (d) source currents ( $I_{sa}, I_{sb}, I_{sc}$ ); (e) load currents ( $I_{La}, I_{Lb}, I_{Lc}$ ); (f) DC-link voltage 1 ( $V_{DC-Link1}$ ); and (g) DC-link voltage 2 ( $V_{DC-Link2}$ )

# A Dual UPQC to Mitigate Sag/Swell, Interruption, and Harmonics on Three Phase Low Voltage Distribution System

---

ORIGINALITY REPORT

---

18%

SIMILARITY INDEX

---

## PRIMARY SOURCES

---

1 Amirullah Amirullah, Ontoseno Penangsang, Adi Soeprijanto. "High Performance of Unified Power Quality Conditioner and Battery Energy Storage Supplied by Photovoltaic Using Artificial Intelligent Controller", International Review on Modelling and Simulations (IREMOS), 2018 172 words — 4%

Crossref

---

2 Agus Kiswantono, Eko Prasetyo, Amirullah. "Mitigation Voltage Sag/Swell and Harmonics Using DVR Supplied by BES and PV System", 2018 Electrical Power, Electronics, Communications, Controls and Informatics Seminar (EECCIS), 2018 148 words — 3%

Crossref

---

3 [www.rogerpollard.org](http://www.rogerpollard.org) 80 words — 2%

Internet

---

4 Suwadi, Wirawan, Mike Yuliana. "Performance Enhancement of Multi-User Key Extraction Scheme (MKES) Based on Imperfect Signal Reciprocity", 2020 3rd International Seminar on Research of Information Technology and Intelligent Systems (ISRITI), 2020 42 words — 1%

Crossref

---

5 [www.isma-isaac.be](http://www.isma-isaac.be) 37 words — 1%

Internet



---

6 Xinkai Zhu, Ming Cheng, Peng Han, Gan Zhang, Xinch  
Wei. "Analysis of dual-stator HTS reluctance-rotor  
brushless doubly-fed wind generator", 2017 20th International  
Conference on Electrical Machines and Systems (ICEMS), 2017

Crossref

---

7 Amirullah Amirullah, Ontoseno Penangsang, Adi  
Soeprijanto. "Matlab/simulink simulation of  
unified power quality conditioner-battery energy storage  
system supplied by PV-wind hybrid using fuzzy logic controller",  
International Journal of Electrical and Computer Engineering  
(IJECE), 2019

Crossref

---

8 Eko Prasetyo, Rani Purbaningtyas, Raden Dimas  
Adityo. "Performance Evaluation of Pre-trained  
Convolutional Neural Network for Milkfish Freshness  
Classification", 2020 6th Information Technology International  
Seminar (ITIS), 2020

Crossref

---

9 Dustin F. Howard, Thomas G. Habetler, Ronald G.  
Harley. "Experimental study on the short-circuit  
contribution of induction machines", 2013 International Electric  
Machines & Drives Conference, 2013

Crossref

---

10 P. Venkatesh Kumar, R. Rajeswari. "A recursive  
discrete Kalman filter for the generation of  
reference signal to UPQC with unbalanced and distorted supply  
conditions", International Journal of Modelling, Identification  
and Control, 2019

Crossref

---

11 S.M. Fagundes, F.L. Cardoso, E.V. Stangler, F.A.S.  
Neves, M. Mezaroba. "A detailed power flow  
analysis of the dual unified power quality conditioner (iUPQC)

- 
- 12 [digitalcommons.cwu.edu](https://digitalcommons.cwu.edu) 19 words — < 1%  
Internet
- 
- 13 "Table of contents", 2020 Third International  
Conference on Vocational Education and  
Electrical Engineering (ICVEE), 2020 18 words — < 1%  
Crossref
- 
- 14 Jain, Chinmay, Ram Niwas, Sagar Goel, and Bhim  
Singh. "Unity power factor operation and neutral  
current compensation of diesel generator set feeding three-  
phase four-wire loads", IET Generation Transmission &  
Distribution, 2015. 18 words — < 1%  
Crossref
- 
- 15 [www.jvr-web.org](http://www.jvr-web.org) 18 words — < 1%  
Internet
- 
- 16 [plansforthebay.org](http://plansforthebay.org) 17 words — < 1%  
Internet
- 
- 17 M.T.L. Gayatri, Alivelu M. Parimi, A.V. Pavan  
Kumar. "Utilization of Unified Power Quality  
Conditioner for voltage sag/swell mitigation in microgrid", 2016  
Biennial International Conference on Power and Energy  
Systems: Towards Sustainable Energy (PESTSE), 2016 15 words — < 1%  
Crossref
- 
- 18 Virmani, Rahul, Prerna Gaur, Himanshu Santosi,  
A.P. Mittal, and Bhim Singh. "Performance  
comparison of UPQC and Active Power Filters for a non-linear  
load", 2010 Joint International Conference on Power Electronics  
Drives and Energy Systems & 2010 Power India, 2010. 15 words — < 1%  
Crossref

---

19 Saurav Roy Choudhury, Anubrata Das, Sandeep Anand, Sanjay Tungare, Yogesh Sonawane. "Adaptive shunt filtering control of UPQC for increased nonlinear loads", IET Power Electronics, 2019

14 words — < 1%

[Crossref](#)

---

20 Hadiwiayatno, Septriandi Wira Yoga, M.Nanak Zakaria. "Microcontroller and Wireless Communication Based Smart Laboratory Box System Implementation", 2020 Third International Conference on Vocational Education and Electrical Engineering (ICVEE), 2020

12 words — < 1%

[Crossref](#)

---

21 Alyaa A. Nassar, Nagy I. Elkalashy, Abdel-Maksoud I. Taalab, Mohamed A. Izzularab. "Salient features of autotransformer overvoltages caused by ferroresonance and load rejection", 2016 Eighteenth International Middle East Power Systems Conference (MEPCON), 2016

11 words — < 1%

[Crossref](#)

---

22 Franca, Bruno W., Leonardo F. da Silva, and Mauricio Aredes. "Comparison between alpha-beta and DQ-PI controller applied to IUPQC operation", XI Brazilian Power Electronics Conference, 2011.

10 words — < 1%

[Crossref](#)

---

23 Kumar, Chandan, M.V. Manoj Kumar, and Mahesh K. Mishra. "A control scheme to enhance DSTATCOM operation in power distribution system", 2015 IEEE 6th International Symposium on Power Electronics for Distributed Generation Systems (PEDG), 2015.

9 words — < 1%

[Crossref](#)

---

24 Leonardo Campanhol, Sergio Silva, Azauri Oliveira, Vinicius Bacon. "Single-Stage Three-Phase Grid-

9 words — < 1%

Tied PV System with Universal Filtering Capability Applied to DG systems and AC Microgrids", IEEE Transactions on Power Electronics, 2017

Crossref

- 
- 25 A Setiyadi, E B Setiawan. "Private Cloud Development in West Java Cooperative and Entrepreneurship Education and Training Center", IOP Conference Series: Materials Science and Engineering, 2020 8 words — < 1%

Crossref

- 
- 26 Bouthaina Madaci, Rachid Chenni, Erol Kurt, Kamel Eddine Hemsas. "Design and control of a stand-alone hybrid power system", International Journal of Hydrogen Energy, 2016 8 words — < 1%

Crossref

- 
- 27 E. V. Stangler, F. A. S. Neves, F. Bradaschia, M. Mezaroba, F. J. Zimann, A. L. Batschauer. "Implementation of a iUPQC control scheme for ensuring an improved compensation performance", 2019 IEEE 15th Brazilian Power Electronics Conference and 5th IEEE Southern Power Electronics Conference (COBEP/SPEC), 2019 8 words — < 1%

Crossref

- 
- 28 Hembram, Mihir, and Ayan Kumar Tudu. "Mitigation of power quality problems using unified power quality conditioner (UPQC)", Proceedings of the 2015 Third International Conference on Computer Communication Control and Information Technology (C3IT), 2015. 8 words — < 1%

Crossref

- 
- 29 Sarita Samal, Prakash Kumar Hota. "Power Quality Improvement by Solar Photo-voltaic / Wind Energy Integrated System Using Unified Power Quality Conditioner", 8 words — < 1%



---

30 Yanjian Peng, Yong Li, Zhisheng Xu, Ming Wen, Longfu Luo, Yijia Cao, Zbigniew Leonowicz. "Power Quality Improvement and LVRT Capability Enhancement of Wind Farms by Means of an Inductive Filtering Method", Energies, 2016 8 words — < 1%  
Crossref

---

31 docslide.net 8 words — < 1%  
Internet

---

32 iaescore.com 8 words — < 1%  
Internet

---

33 Saimon M. Fagundes, Marcello Mezaroba. "Reactive power flow control of a Dual Unified Power Quality Conditioner", IECON 2016 - 42nd Annual Conference of the IEEE Industrial Electronics Society, 2016 7 words — < 1%  
Crossref

---

34 Jiaqi Yu, Yong Xu, Yong Li, Qianyi Liu. "An Inductive Hybrid UPQC for Power Quality Management in Premium-Power-Supply-Required Applications", IEEE Access, 2020 6 words — < 1%  
Crossref

---

35 Rajesh Kumar Patjoshi, Venkata Ratnam Kolluru, Kamalakanta Mahapatra. "Power quality enhancement using fuzzy sliding mode based pulse width modulation control strategy for unified power quality conditioner", International Journal of Electrical Power & Energy Systems, 2017 6 words — < 1%  
Crossref

36

Raphael J. Milnitz dos Santos, Jean Carlo da Cunha, Marcello Mezaroba. "A Simplified Control Technique for a Dual Unified Power Quality Conditioner", IEEE Transactions on Industrial Electronics, 2014

Crossref

6 words — < 1%

EXCLUDE QUOTES      OFF  
EXCLUDE BIBLIOGRAPHY   ON

EXCLUDE SOURCES      OFF  
EXCLUDE MATCHES      OFF