



YAYASAN BRATA BHAKTI JAWA-TIMUR
UNIVERSITAS BHAYANGKARA SURABAYA
LEMBAGA PENELITIAN DAN PENGABDIAN KEPADA MASYARAKAT
(LPPM)

Jalan Ahmad Yani 114 Surabaya, Telp. 031-8285602, 8291055, Fax. 031-8285601

SURAT KETERANGAN

Nomor : Sket/60/II/2023/LPPM/UBHARA

Yang bertanda tangan dibawah ini :

Nama : Drs. Heru Irianto, M.Si
NIP : 9000028
NIDN : 0714056102
Jabatan : Kepala Lembaga Penelitian dan Pengabdian Kepada Masyarakat
(LPPM) Universitas bhayangkara Surabaya

Dengan ini menerangkan bahwa dosen prodi Teknik elektro Universitas Bhayangkara Surabaya atas nama **Dr. Ir. Saidah, MT** benar telah melakukan kegiatan :

1. Menulis artikel yang telah di publish di Jurnal Internasional **Telkomnika, Volume 10, Nomor 4** berjudul **Ambient light adaptive LED light dimmer**, sebagai koresponden, Desember 2019, ISSN : 2088-8694, **terindeks Scopus Q3**
2. Telah melakukan korespondensi melalui email dan OJS dalam proses review dan penerbitan jurnal tersebut. Bukti korespondensi email dan bukti pendukung adalah benar sudah dilakukan oleh yang bersangkutan serta sudah dilampirkan bersama surat ini.

Demikian surat keterangan ini dibuat untuk dapat dipergunakan sebagaimana mestinya.



Surabaya, 31 Januari 2023

Kepala LPPM

SURABAYA
LPPM
Drs. Heru Irianto, M.Si.

ARTIKEL DITERIMA PADA ICW CONFERENCE



Saidah Ubhara <saidah@ubhara.ac.id>

[TELKOMNIKA] Editor Decision - (Link for Registration) --> bit.ly/icw-telkomnika2018

icw.telkomnika@journal.uad.ac.id <icw.telkomnika@journal.uad.ac.id>

6 Agustus 2018 pukul 14.58

Kepada: saidah@ubhara.ac.id

--- International Conference and Workshop on TELKOMNIKA (Telecommunication Computing Electronics and Control) 2018

--- September 18-21, 2018 at ROYAL AMBARRUKMO Yogyakarta

--- [Jl. Laksda Adisucipto No.81, Ambarukmo, Caturtunggal, Depok, Sleman](#)

--- [Yogyakarta 55281, Indonesia](#)

Dear Prof/Dr/Mr/Mrs Authors:

We have reached a decision regarding your submission entitled "**ADAPTIVE LIGHT DIMMER**" Paper ID # 10114 to International Conference and Workshop on TELKOMNIKA (Telecommunication Computing Electronics and Control) 2018 (ICW TELKOMNIKA 2018).

Our decision is to ACCEPT with minor revisions.

We invite you to present your paper in the ICW TELKOMNIKA 2018 on Sep 18-20, 2018 in Yogyakarta, Indonesia. All presented papers (after revisions based upon feedback at the conference & workshop, if necessary) will be published in the TELKOMNIKA Telecommunication Computing Electronics and Control (a Scopus indexed journal, SCImago Journal Rank (SJR) Q3) as REGULAR issue. All presented papers will be prioritized for publication in our journal, but all submitted papers still will be processed for possible publication if the papers are suitable.

In preparing your final camera ready paper for conference, you should pay attention to:

1. Authors should have made substantial contributions to:

- (a) the conception and design of the study, or acquisition of data, or analysis and interpretation of data
- (b) drafting the article or revising it critically for important intellectual content

2. Introduction section

Explain the context of the study and state the precise objective

An Introduction should contain the following three parts:

- Background: Authors have to make clear what the context is. Ideally, authors should give an idea of the state-of-the-art of the field the report is about.

- The Problem: If there was no problem, there would be no reason for writing a manuscript, and definitely no reason for reading it.

So, please tell readers why they should proceed reading. Experience shows that for this part a few lines are often sufficient.

- The Proposed Solution: Now and only now! - authors may outline the contribution of the manuscript. Here authors have to make sure readers point out what are the novel aspects of authors work. Authors should place the paper in proper context by citing relevant papers. At least, 5 references (recently journal articles) are used in this section.

3. Results and Discussion

The presentation of results should be simple and straightforward in style. This section reports the most important findings, including results analyses as appropriate and comparisons to other research results. This section should be supported suitable references.

4. Conclusion

Your conclusion should make your readers glad they read your paper. Summarize sentences the primary outcomes of the study in a paragraph (NOT in numbering).

5. References and Citations

We usually expect a minimum of 25 and 40 references primarily to recent journal papers for research/original paper and review paper, respectively. Each citation should be written in the order of appearance in the text [1], [2], [3], [4], (Sequential order!!)

URGENT: SELF CITATION from same author or group authors is MAX 10%.

6. Paragraph

A paragraph is a sentence or group of sentences that support one main idea. Many authors have presented paragraphs in very long terms. Author should use simple sentences which are grammatically correct, but too many can make your writing less interesting.

Every paragraph in a paper should be:

- Unified: All of the sentences in a single paragraph should be related to a single controlling idea (often expressed in the topic sentence of the paragraph).
- Clear: The sentences should all refer to the central idea of the paper.
- Coherent: The sentences should be arranged in a logical manner and should follow a definite plan for development.
- Well-developed: Every idea discussed in the paragraph should be adequately explained and supported through evidence and details that work together to explain the paragraph's controlling idea.

IMPORTANT:

Please register & submit your final camera paper in MS Word file format (or LATEX source files; ZIP your files if you present your final paper in LATEX) through bit.ly/icw-telkomnika2018 (registration form) or goo.gl/q7Hjx3 (registration form) as soon.

Conference fee please refer to bit.ly/icw-poster or goo.gl/3WJWFp

Batch I (for latest papers submission: May 1, 2018)

- Early Bird deadline: Jul 30, 2018
- Registration deadline: Aug 10, 2018

Batch II (for papers submission AFTER May 1, 2018)

- Early Bird deadline: Aug 10, 2018
- Registration deadline: Aug 30, 2018

This fee covers conference, gala dinner, seminar kit, workshop & publication fees on the TELKOMNIKA, but excludes hotel room, transportation & tour.

Payment is by T/T transfer:

Bank Account name (please be exact)/Beneficiary: TOLE SUTIKNO

Bank Name: Bank Central Asia (BCA)

Branch Office: Kusumanegara

City: Yogyakarta

Country :Indonesia

Bank Account #: 8465122249

SWIFT Code: CENAIJAXXX

I look forward for hearing from you

Thank you

Best Regards,

Assoc. Prof. Dr. Tole Sutikno

General Chair, ICW TELKOMNIKA 2018

Editor-in-Chief, TELKOMNIKA, Scimago Journal Rank (SJR): Q3

email: tole@journal.uad.ac.id

Tentative agenda of the ICW TELKOMNIKA:

--- September 18-21, 2018 at Royal Ambarrukmo Yogyakarta

--- [Jl. Laksda Adisucipto No.81, Ambarukmo, Caturtunggal, Depok, Sleman](#)

--- [Yogyakarta 55281, Indonesia](#)

* Sep 18, 2018 (08.00-21.00): International Conference-Keynote Speeches and Parallel Sessions

* Sep 19, 2018 (08.00-11.45): International Conference (cont.)

* Sep 19, 2018 (13.00-17.00): Tutorial on Humanoid Robot (Prof. Nadia Magnenat Thalmann), Virtual Reality (Prof. Daniel Thalmann) and Intelligent Autonomous Systems (Prof. Er Meng Joo)

- * Sep 19, 2018 (18.00-21.30): Award Ceremony Program and Gala Dinner
- * Sep 20, 2018 (08.00-16.00): Scientific Writing Workshop on TELKOMNIKA Editors and Authors Meeting (TEAM) for upgrading our papers based upon feedback at the conference.
- * Sep 21, 2018: One Day Tour Yogyakarta (optional) - Tour to Yogyakarta and vicinity visiting Sultan's Palace or Kraton, Taman Sari Water Castle, Borobudur and Prambanan Temples

Ignore this email, if your paper is mentioned to be accepted by previous notification and you have register to Google Form

BUKTI BAYAR ICW-CONFERENCE



UNIVERSITAS AHMAD DAHLAN
LEMBAGA PENERBITAN DAN PUBLIKASI ILMIAH (LPPI)

No. 10114

PAYMENT RECEIPT

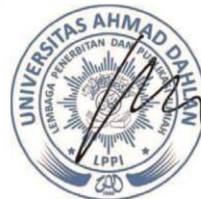
Received From Organizing Committee of ICW-TELKOMNIKA 2018

Received from **SAIDAH**

Amount Paid **Rp 4.800.000**

Purpose of Payment **ICW TELKOMNIKA 2018 PAYMENT**

Yogyakarta, 15 August 2018



Tole Sutikno, M.T., Ph.D.
NIY. 60010310

SERTIFIKAT ICW CONFERENCE

ICW 2018

TELKOMNIKA

2018 1st INTERNATIONAL CONFERENCE AND WORKSHOP ON
TELECOMMUNICATION, COMPUTING,
ELECTRICAL, ELECTRONICS AND CONTROL

September 18-21, 2018 | Royal Ambarukmo Hotel, Yogyakarta, Indonesia

CERTIFICATE OF APPRECIATION

is awarded to

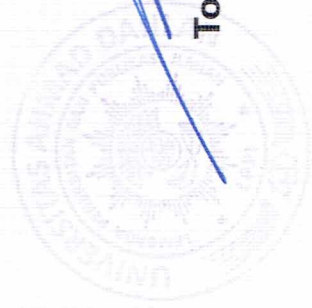
Saidah

In recognition and appreciation of your contribution as

Presenter

for paper entitled

Ambient Light Adaptive LED Light Dimmer




Tole Sutikno, Ph.D.
Director, LPPI UAD


Anton Yudhana, Ph.D.
Conference Chair



ARTIKEL DITERIMA PADA ICW CONFERENCE
DAN AKAN DIPUBLISH DI TELKOMNIKA
MELALUI MENTORING DAN REVISI



LEMBAGA PENERBITAN DAN PUBLIKASI ILMIAH
UNIVERSITAS AHMAD DAHLAN

Kampus I: Jln. Kapas 9, Semaki, Yogyakarta 55164

Website: <http://lppi.uad.ac.id>, email: lppi@uad.ac.id

Yogyakarta, September 1, 2018

No. : L6/084/ICW/VIII/2018

To:

Saidah

Universitas Bhayangkara Surabaya, Indonesia

Dear Sir/Madam,

Your paper #10114 (Ambient Light Adaptive LED Light Dimmer) for ICW-TELKOMNIKA 2018 was evaluated by anonymous referees by single blind peer review for contribution, originality, relevance, and presentation. Congratulations, your paper is **ACCEPTED** for 1st International Conference and Workshop on Telecommunication, Computing, Electronics and Control 2018 (ICW-TELKOMNIKA 2018). This conference will be held in September, 18-21 2018 in Yogyakarta, Indonesia. All presented papers in this conference (after revisions based upon feedback at the conference & workshop, if necessary) will be published in the TELKOMNIKA Telecommunication Computing Electronics and Control (Scopus indexed journal, SJR Q3).

If you have any question, please contact our committee on icw.telkomnika@journal.uad.ac.id
cc: tole@journal.uad.ac.id.

Thank you for your contribution to ICW TELKOMNIKA 2018 and we look forward to meeting you on the conference.

Sincerely yours,



Tole Sutikno, M.T., Ph.D.
NIY. 60010310

PAPER DARI ICW CONFERENCE YANG
TERPILIH MASUK JURNAL TELKOMNIKA
MELALUI REVISI DAN MENTORING



Saidah Ubhara <saidah@ubhara.ac.id>

[ICW-Telkomnika] INFORMATION ABOUT UPDATE LIST COACHING PAPER

icw.telkomnika@journal.uad.ac.id <icw.telkomnika@journal.uad.ac.id>
Kepada: saidah@ubhara.ac.id

19 September 2018 21.36

Dear ICW TELKOMNIKA Presenters,

Tomorrow, on September 20, 2018 will be held **Manuscript Mentoring and Coaching**. You can check your mentor and room in bit.ly/icwtelkomnika18, file **UPDATE LIST COACHING PAPER**. Please check it again, because we have little change about the list. Thank you.

Best regards,
ICW TELKOMNIKA Committee

REVIEW PAPER



Saidah Ubhara <saidah@ubhara.ac.id>

revised paper

2 pesan

Saidah Ubhara <saidah@ubhara.ac.id>
Kepada: tole@journal.uad.ac.id

24 Oktober 2018 pukul 16.10

Dear
Tole Sutikno, Ph.D.
General Chair, 2018 ICW-TELKOMNIKA
Editor-in-Chief, TELKOMNIKA

I send my paper that have revised and File Response to Mentor(s) Comments.
Thanks

Best Regards
Dr. Saidah

2 lampiran**Paper ICW18 - Revised.docx**
656K**FORM COMMENT REVIEW.docx**
19K

Tole Sutikno <tole@journal.uad.ac.id>
Kepada: saidah@ubhara.ac.id

24 Oktober 2018 pukul 17.34

Dear Sir/Madam,

Your email has reached my queues safely, so i will get back in touch with you there as soon as i can. Just a heads up i might not get back to you straight away, as i answer all emails in order to keep things fair.

How to submit your manuscript

To make a submission, you must have a user account and be enrolled as an Author. User accounts can either be created by the Journal Manager or you can register yourself (this journal policy allow you create user account by your self as a Reader, an Author and/or a Reviewer). All fields with an asterisk beside them (Username; Password; Repeat Password; First Name; Last Name; Email) are mandatory. Your username and your email address must be unique; furthermore, while you can change your email address at a later date, you will be unable to change your username. If you want to register in another role within the same journal (for example, if you are already a Reader, but also want to become an Author) you can log in; go to Edit My Profile (under My Account on your User Home page); and check off the checkboxes next to any available roles, near the bottom of the page. Once you have an account, log in to the journal site and select the role of Author. The Author is asked to upload a submission file and to provide metadata or indexing information. (The metadata improves the search capacity for research online and for the journal.) The Author can upload Supplementary Files, in the form of data sets, research instruments, or source texts that will enrich the item, as well as contribute to more open and robust forms of research and scholarship.

Your paper ID?

Please ALWAYS put your paper ID number in the subject line of email communication when making inquiries. For example, if your submitted manuscript URL: <http://journal.uad.ac.id/index.php/TELKOMNIKA/author/submission/1234>, your paper ID number is 1234.

Your cooperation is very appreciated.

Thank you

Best Regards,
Tole Sutikno
Editor:
TELKOMNIKA TCEC, <http://journal.uad.ac.id/index.php/TELKOMNIKA>

****Journal Form for Hardcopy Order****

Please download "[Journal form for Hardcopy order](#)" and contact us if further information is needed:

1. Mr. Sulchan Hidayat: sulchan.hidayat@gmail.com, +62 81328731075
2. Mr. Son Ali Akbar: sonjannah@gmail.com, Phone: +62 85643888512
3. Dr. Anton Yudhana, eyudhana@yahoo.com, +62 85746722592

Our events:

International Conference and Workshop on Telecommunication, Computing, Electronics and Control (ICW-TELKOMNIKA), September 18-21, 2018 in Yogyakarta, Indonesia
<http://journal.uad.ac.id/index.php/TELKOMNIKA/pages/view/conference>

2018 5th International Conference on Electrical Engineering, Computer Science and Informatics (EECSI 2018), October 16-18, 2018 in Malang, Indonesia.
<http://eecsi.org/2018>

LETTER OF ACCEPTANCE



Saidah Ubhara <saidah@ubhara.ac.id>

[TELKOMNIKA] FEBRUARY 2019 Proofreading

1 pesan

TELKOMNIKA Editors and Authors Meeting <team@journal.uad.ac.id>

31 Desember 2018 pukul 15.55

Kepada: saidah@ubhara.ac.id

Dear Authors,

We hope this email reach you well. We are from TELKOMNIKA Staff want to inform you that your paper ID 10114 entitled Ambient Light Adaptive LED Light Dimmer already published in February 2019 Issue. Please check the pdf of your paper that attach in here. We suggest you to checking your paper and if the pdf is correct, we will upload it to OJS TELKOMNIKA.

If you have something to tell us about your paper, please reply this email. We will wait your response until **December 30, 2018**.

Thank you for your cooperation.

Best regards,
TELKOMNIKA Staff



53 24Oct18 31May 10114 Saidah Revised (Iila).pdf
1027K

ARTIKEL PADA TELKOMNIKA

Ambient light adaptive LED light dimmer

Taufik¹, William Xiong², Jonathan Sato³, Saidah^{*4}

^{1,2,3}Department of Electrical Engineering, California Polytechnic State University
1 Grand Avenue, San Luis Obispo, USA, +1-805-7562781

⁴Department of Electrical Engineering, Bhayangkara University
Ahmad Yani St. 114, Surabaya, Jawa Timur 60231, Indonesia, 031-8285602

*Corresponding author, e-mail: taufik@calpoly.edu¹, saidah@ubhara.ac.id⁴

Abstract

This paper presents the design of an Adaptive Light Dimmer based on the method of sensing ambient light content to adjust lamp's light intensity accordingly, and thus regulating the room's light content. The device is designed to work with renewable energy sources such as wind and solar energy. This would be useful in less developed countries where AC electricity is not well spread and renewable DC sources, such as solar, can be better utilized. It functions by using the TSL2561 light sensor, ATtiny85 microcontroller to output PWM to the LED driver, LT3795 LED driver to output current to an LED and LT3014 LDO to lower the input voltage and power the microcontroller and sensor. The dimmer is designed to work with a 48V input voltage and operate from an input light range of 20 to 100 Lux. Above 100 Lux the light is off and below 20 Lux the light is fully on.

Keywords: adaptive dimmer, LED driver, light dimmer

Copyright © 2019 Universitas Ahmad Dahlan. All rights reserved.

1. Introduction

With regard to efficiently using sustainable energy, there is a significant amount of data supporting the energy saving capabilities of light dimming technology. Some state that smart lighting, using sensors and controllers to control lighting, saves between 50% and 70% of energy compared to an uncontrolled lighting system [1-5]. These energy savings have huge impacts, considering that lighting accounts for about 19% of the electrical energy generated worldwide. In commercial buildings, lighting accounts for even more, 30-40% [6-11]. This being said, smart lighting seems to be the next logical step in saving electricity and tackling the problems of world-wide electrification in today's world.

In order to improve smart lighting technology, it makes sense to utilize electrical devices, such as microcontrollers, to increase efficiency and usability of lighting systems. Microcontrollers would be a reasonable choice for controlling light dimmer due to their decreasing costs, versatility, and ease of use [12-14]. In addition to microcontrollers, DC-DC converters are also essential to improving smart lighting systems [15-17]. These converters are the most efficient ways of converting DC power and consequently are used in many stages of power conversion. Without them, electronics, such as lighting systems, would be much more inefficient. Any improvements to these DC-DC converters directly improve the efficiency and performance of smart lighting systems.

There are existing solutions for AC lighting in the form of smart lighting and socket to bulb interfaces [18-22]. Smart lighting uses "smart systems" to control lighting with applications in computers, tablet devices, or smart phones. On a larger scale, they can also be used to control the lighting system of a room, house, or building. They can wirelessly turn on and off lights, control their brightness, set the lights on a timer, and even integrate sensors. Existing socket to bulb interfaces use a sensor in an attempt to dim the bulb appropriately but they do not function very well. An example of an AC powered smart lighting device, called a home light control module (HLCM) and designed by Ying-Wen Bai and Yi-Te Ku, uses passive infrared (PIR) sensors, light sensors, a microprocessor, and an RF module to control light intensity in all the rooms of a house [23]. The system is illustrated in Figure 1. A single HLCM controls one set of luminaires. As a result, multiple microprocessors determine lighting levels, rather than a single central controller. This device uses the PIR sensors to determine the presence of any people in a room, turning off the lights if no one occupies the room. The light sensors determine

the room's brightness levels. If outside sources, like daylight, provide enough light, then the luminaires are turned off. Otherwise, the system activates the appropriate amount of luminaires to achieve the desired brightness levels. The device's RF module allows communication between different HLCMs. In the case that brightness levels are insufficient even when all luminaires are on, communication between HLCMs allows an adjacent HLCM to increase the number of lights to activate. This then affects the light intensity of the first device's room. While these components help this device operate with high efficiency, the design presented in this paper needs not contain any unnecessary modules if their inclusion greatly increases purchase costs. For example, there won't be any need to use the RF module if its use produces costs that outweigh its energy benefits. Additionally, the HLCM does not use light dimming technology while the proposed solution is based on light dimming.

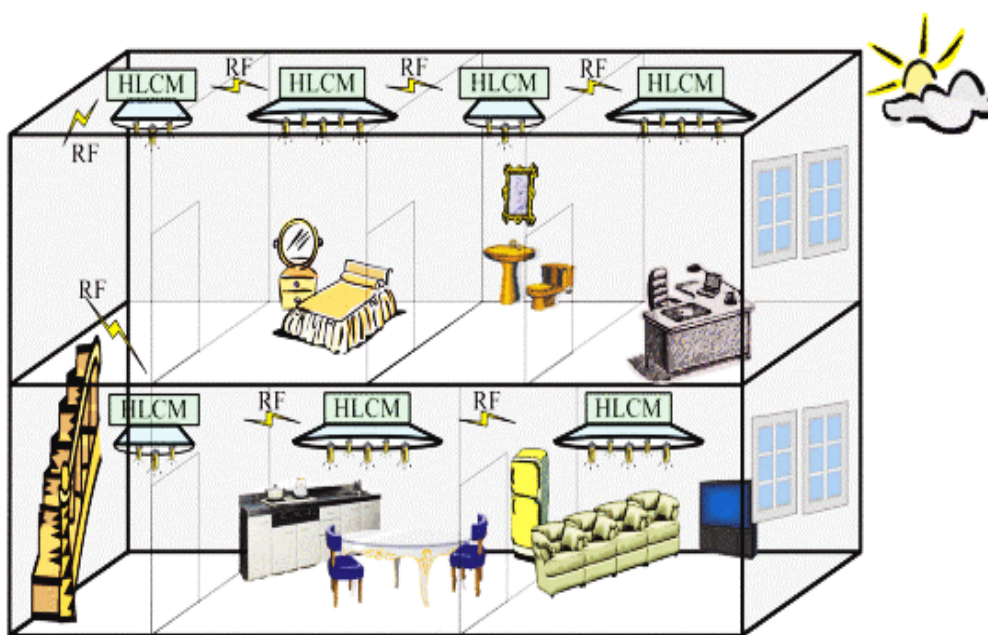


Figure 1. The configuration of an HLCM system for a 2 story house [20]

However, there are currently no existing DC dimmers that are inexpensive and entirely autonomous. The objective of the proposed solution is therefore to design and construct an adaptive DC light dimmer that autonomously dims a set of LEDs depending on the ambient light sensed in the room, providing the appropriate amount of light to the environment it is in. The end product of this project will save electricity usage; thus, reducing electrical costs and increasing the viability of renewable energy.

2. Design Methodology and Requirements

For the proposed design, the adaptive light dimmer must be able to produce the same or more light than a normal 60W incandescent light bulb at maximum brightness. This was determined to be roughly 800 lumens. If the adaptive light dimmer is incapable of producing the appropriate amount of light, a house may not be bright enough during darker hours of the day. Another important aspect is the efficiency of the device. Having better efficiency leads to less costs in terms of both energy and money. While both are definitely important, reduction in energy costs will likely have a greater impact on those rural areas depending on renewable energy sources, since these energy resources are much more limited. The adaptive light dimmer should have at least an efficiency of 70% at full load.

In addition, the device should consume a relatively low amount of power. Considering that the LED being used is a 5 W rated LED, the maximum output power must be 5 W. Derived from the efficiency requirement, the maximum input power must be 7.14 W. The device must be

able to operate from a 48 V input, for example to match the DC bus used by the DC house project [24]. It should ideally be able to operate at other DC voltages as well for other applications. The device must also be quick to respond without causing abrupt changes. So, the device should be able to adjust its output at least once every two seconds. Each adjustment may need to be gradual for any sudden changes in the surrounding brightness levels.

The sensor should be sensitive enough that it can differentiate changes in daylight throughout the day. The sensor measures light intensity in lux, so the placement of the sensor can have a significant effect on measurement values. The best place to put the sensor is near the floor, as this minimizes the vertical movement of the sensor. Near the floor, the expected lux measurements range from 35 to 150 lux. The device will be connected to a lamp, so the entire system will be fairly large. Approximately, the height must be 4 to 5 feet, and the base should be about a foot in diameter. The height will also help to spread the light to the entire room.

Figure 2 depicts the block diagram of the design, consisting of specialized blocks each with their individual inputs and outputs (I/O). It specifies the types and connections of these I/Os and how it achieves the desired output to the level 0 block diagram. The system first takes the 48 V DC and sends it through a Low-Dropout Regulator (LDO) to lower the voltage to 5 V so that it may be used to power the microcontroller and photosensitive sensor. The photosensitive sensor communicates via i2c to the microcontroller to give a light intensity reading. The microcontroller then maps this reading to a corresponding pulse width modulated (PWM) control voltage that it outputs to the LED driver. Based on the PWM voltage it receives from the microcontroller, the LED driver outputs appropriate PWM current using the 48 V DC from the bus. The LED is driven by the current output and produces the correct amount of light out.

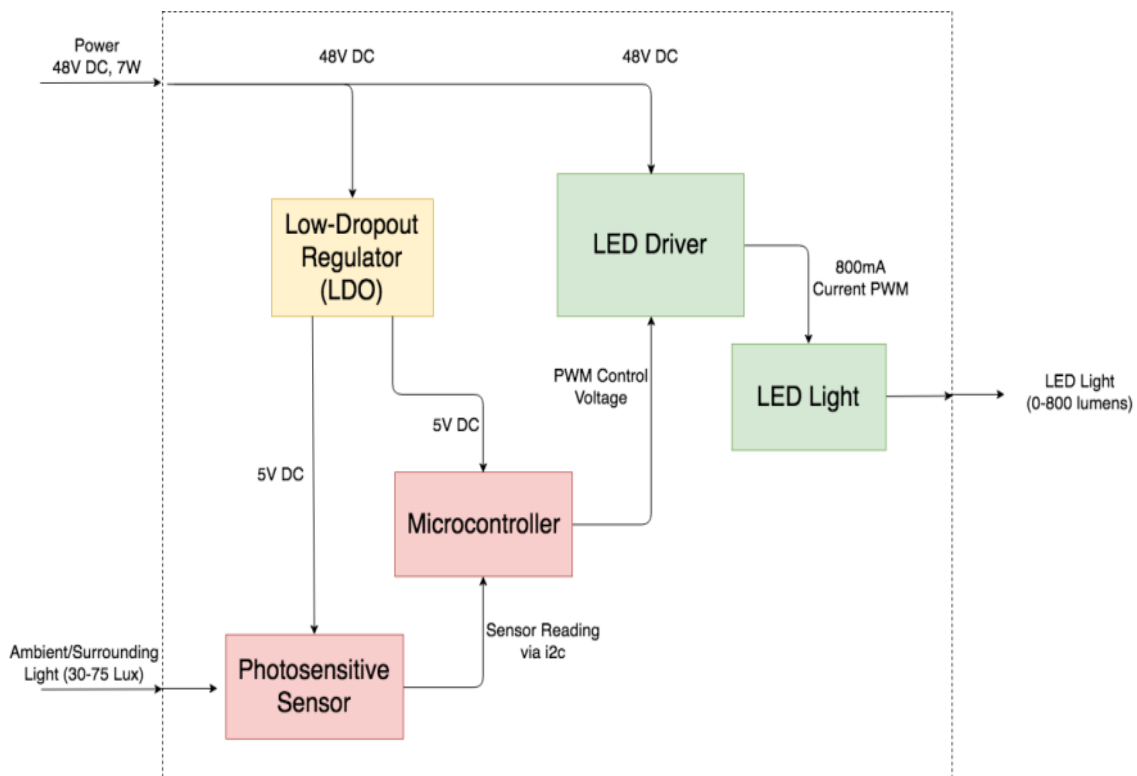


Figure 2. Block diagram of the adaptive light dimmer

The software flow diagram as illustrated in Figure 3 describes the process performed by the microcontroller. The microcontroller initializes the photosensitive sensor and then goes into an endless loop consisting of three stages. First it requests a reading from the sensor. Once it has received and stored this reading, it maps the reading to an appropriate PWM output value through a lookup table. The PWM is then written out to the appropriate pin.

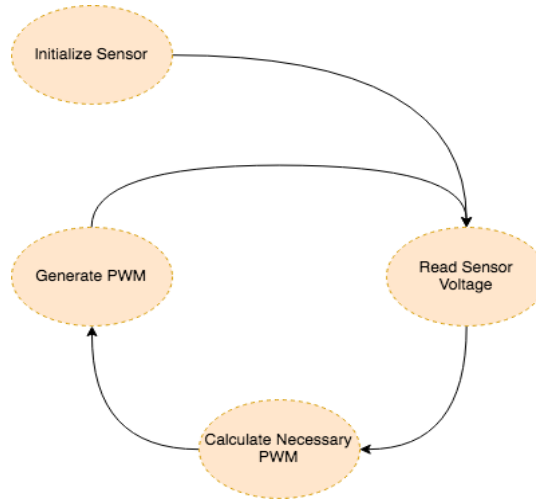


Figure 3. Software flow diagram of the adaptive light dimmer

3. Design and Simulation Results

The main purpose of the Adaptive Light Dimmer is to both minimize costs by using cheaper materials while maximizing efficiency and to operate from a DC voltage source, allowing renewables to be a direct source of power. Simplifying the design can also allow the device to operate without worry of installation. The Adaptive Light Dimmer has three main parts to design. First is the LED driver, which has to drive a 5 V LED at a maximum current of 800 mA. The second is the LDO linear regulator, which had to step down the 48 V input to 5 V in order to power the microcontroller and the light sensor. The last portion of the design is the combination of the microcontroller and the light sensor, both of which have to operate at 5V.

The LED driver used is Linear Technology's LT3795 since it can operate with an input voltage of 48V. The circuit is a buck mode LED driver meant to operate from 24 V to 80 V and output a controlled current to the LEDs. This current can be controlled directly by changing the control voltage or by sending a PWM signal into the PWM pin of the device. The components that has to be changed are the input capacitor C_{IN} , the inductor L , the input current sense resistor $R_{INSENSE}$, the LED current resistor R_{LED} , the PMOS, the NMOS, and the PNP BJT. These components directly affect the operation of the circuit, so they are changed in order to produce the correct maximum output current and to keep the circuit from damaging any components in the design. Because the input voltage was 48 V, during transient operation, the voltage could reach upwards of 63V; thus, requiring careful consideration when designing the circuit. The equation used to find the appropriate value of C_{IN} in microfarads is:

$$C_{IN} = I_{LED} \cdot V_{LED} \cdot \frac{(V_{IN} - V_{LED})}{V_{IN}^2} \cdot T_{SW} \cdot \frac{10\mu F}{A \cdot \mu s}$$

$$C_{IN} = 0.8A \cdot 5V \cdot \frac{(48V - 5V)}{(48V)^2} \cdot \frac{1}{400000Hz} \cdot \frac{10\mu F}{A \cdot \mu s} = 1.87\mu F \quad (1)$$

the equation for sizing the inductor:

$$L = \frac{(T_{SW} \cdot R_{SENSE} \cdot V_{LED} \cdot [V_{IN} - V_{LED}])}{V_{IN} \cdot 0.02V} = \frac{\left(\frac{1}{400000Hz} \cdot 0.015\Omega \cdot 5V \cdot [48V - 5V]\right)}{48V \cdot 0.02V} = 8.4\mu H \quad (2)$$

The input current sense resistor is determined more loosely. Because the configuration is a buck LED driver, the input current should not be very high, so R_{INSNS} is chosen as 100 mΩ. By the equation below, the maximum input current can be determined.

$$I_{IN(MAX)} = \frac{0.06V}{R_{INSNS}} = \frac{0.06V}{0.1\Omega} = 600 \text{ mA} \quad (3)$$

The LED current resistor is chosen such that the maximum LED current is 800 mA. Because the control pins are tied high, the equation used to determine the LED current resistor is simplified to:

$$R_{LED} = \frac{0.25V}{I_{LED(MAX)}} = \frac{0.25V}{0.8A} = 312.5 \text{ m}\Omega \quad (4)$$

The PMOS and PNP BJT transistors are chosen differently because the ones from the datasheet are not readily available for both simulation and hardware tests. The same is true for the NMOS transistor, but in addition, the NMOS transistor is chosen to minimize the gate charge. Higher gate charge values increases the current in the INTVCC pin and could disrupt the operation of the circuit by dropping the INTVCC pin below the threshold.

$$Q_{G(MAX)} = \frac{I_{INTVCC}}{f_{OSC}} = \frac{0.02A}{400000Hz} = 50nC \quad (5)$$

The timing resistor, which determines the switching frequency of the LED driver, is determined to yield 400 kHz. This frequency is neither too low, which would increase component sizing, nor too high, which would increase losses. The feedback resistors, which set the maximum output voltage, are adequate because the LEDs operated at 5 V. The sense resistor R_{SNS} is used to measure the actual current through the LEDs. Its value must be less than $0.07 \text{ V}/I_{LED}$, which for 800 mA, is calculated to be 87.5 m Ω . The final design of the LED driver is shown in Figure 4. Simulations of the design were done using LTSpice. Results are shown in Figures 5 and 6 for the output voltage and the input current at 100% duty cycle, respectively.

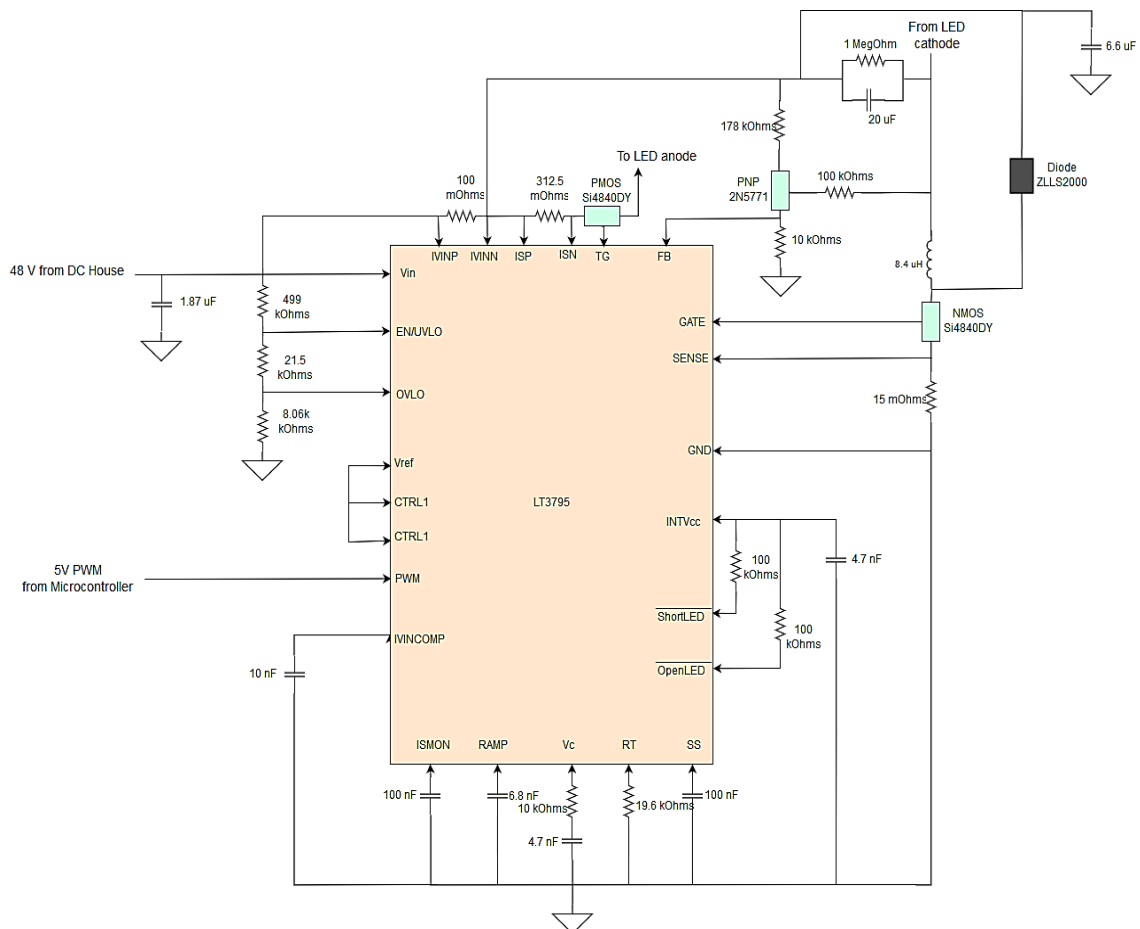


Figure 4. Final schematic of LED driver for the adaptive light dimmer

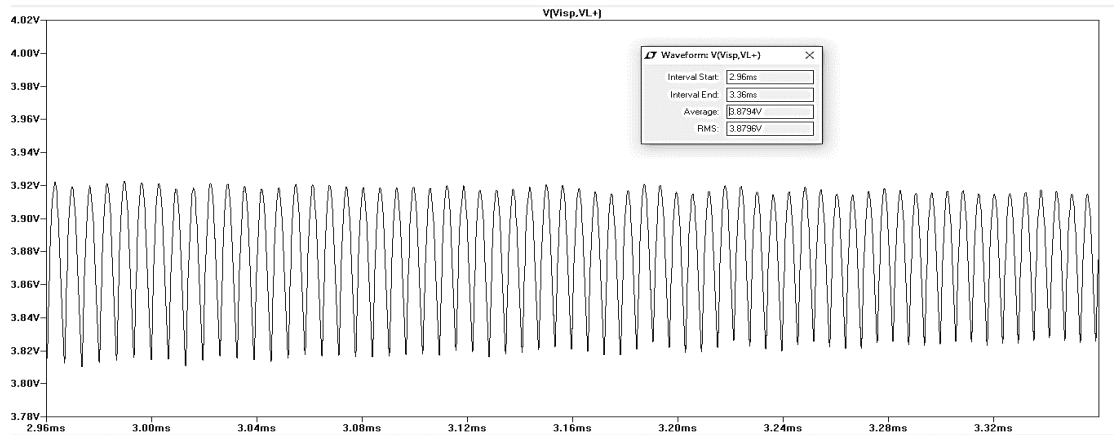


Figure 5. Simulation result for output voltage at 100% duty cycle

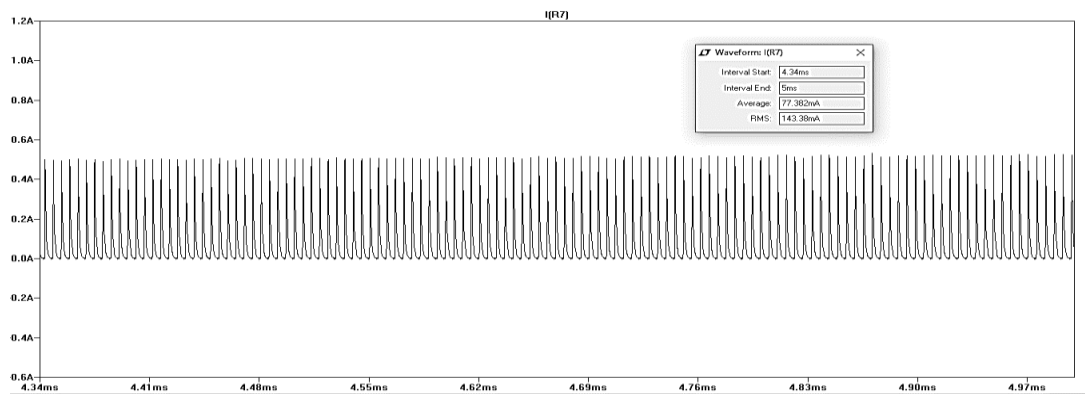


Figure 6. Simulation result for input current at 100% duty cycle

The second portion of the dimmer is the low drop-out regulator (LDO) circuit which lowers the 48 V input to a usable 5V for the microcontroller and sensor. The LT3014 was chosen because it fits well into the design; it has the capability of dropping 48 V to 5 V, and it would incur little power loss since the microcontroller/sensor circuit would not pull a significant amount of current. Figure 7 shows the configuration of the LDO to be implemented taken from the LT3014 datasheet. This configuration is setup for “5 V Supply with Shutdown” according to the datasheet and fits the needs of the light dimmer. The value of the capacitor on the output was specified to be at least 0.47 μ F to prevent oscillations.

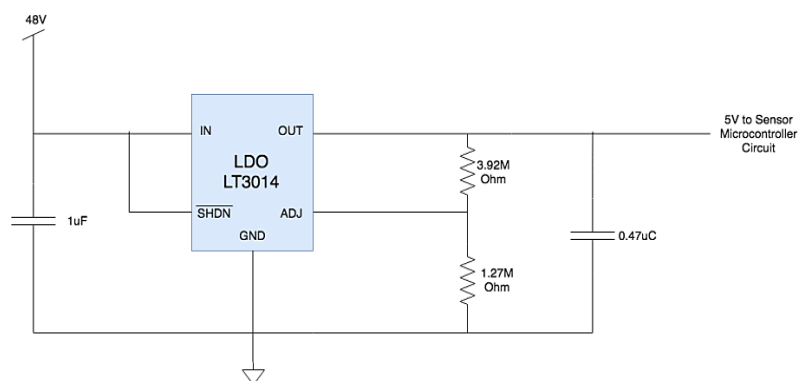


Figure 7. The LDO section of the adaptive light dimmer

The final portion of the dimmer consists of the sensor and microcontroller circuits. The VEML6070 is chosen due to its ability to communicate via I2C and to detect UV light, and because its operating voltage range that is the same as the ATtiny85. The ATtiny85 is chosen for its low cost, I2C capability and ability to produce a PWM output. In addition, it also can be programmed with the Arduino UNO using Sketch's built in "ArduinolSP" library. Since the VEML6070 communicates via I2C, the SDA (data line) and SCL (clock line) have 4.7 k Ω pull up resistors to ensure proper logic levels. These are connected to the 5 V from the LDO, which supplies voltage to the microcontroller and UV light sensor. The output PWM on pin six on the microcontroller connects to the PWM input of the LED Driver. The ACK pin of the VEML6070 sends a signal if the UV light reading drops below a built in threshold and was not connected since the feature is not necessary for the function of the device. The ground is common to the LED driver and LDO circuits as well. The design of the circuit is shown in Figure 8.

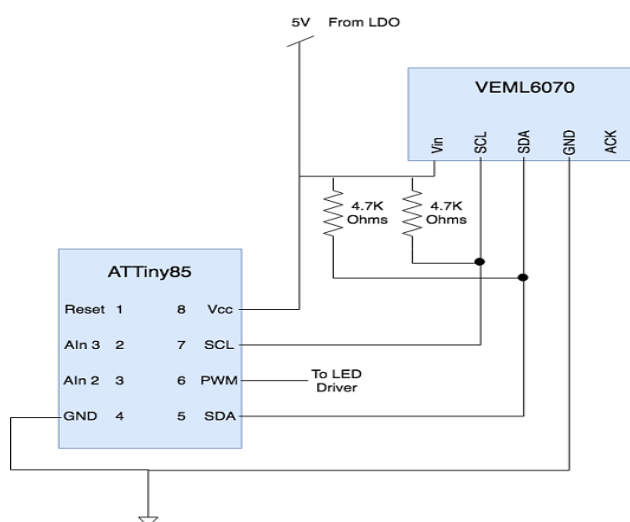


Figure 8. Sensor and Microcontroller Circuit Diagram of the adaptive light dimmer

3. Hardware Construction and Results

The hardware of the light dimmer was built and tested in separate stages. The LED driver, LDO, microcontroller, and sensor were tested individually and then combined to construct the entire system. After constructing the circuit on the PCB as shown in Figure 9, testing the individual components, and checking all possible connections, power was applied and the entire system to evaluate its functionality. Results from the test demonstrate that when dark below 10 Lux, the LED driver received 100% duty cycle and the lamp went to full brightness, and when bright above 100 Lux, the LED driver receives 0% duty cycle and the lamp outputs no light. Different duty cycles were assigned to different ambient light levels in between 0 and 100 Lux. This approach reduces the complexity in the operation of LED drive using the pulse density modulation [25-26].



Figure 9. Adaptive light dimmer hardware prototype

The LED dimmed and grew brighter according to how much light reached the sensor, and the brightness changed smoothly without visible leaps in light output. The adaptive light dimmer worked as expected as ambient light levels increased and increased in brightness during low light. When dark, below 10 Lux, the LED driver received 100% duty cycle and the lamp went to full brightness and when bright, above 100 Lux, the LED driver received 0% duty cycle and the lamp outputs no light. Different duty cycles were assigned to different ambient light levels in between 0 and 100 Lux. The LED dimmed and grew brighter according to how much light reached the sensor, and the brightness changed smoothly without visible leaps in light output. Furthermore, the proposed design was quick to respond to changes in the environment, as the LED was able to change more quickly than once every two seconds and each change was gradual. This is important to prevent the LED's dimming from bothering users. Overall, the proposed adaptive light dimmer is an improvement in functionality compared to the results presented in [2].

However, this achievement comes at the cost of efficiency because the microcontroller and sensor draw about 30 mA, increasing the input power needed while the output power of the LED stays constant. This current is relatively significant compared to 115 mA input current needed for the LED driver. Thus, the microcontroller and sensor increased the input current to yield input power by 26%. The high input voltage of 48 V meant that input power increased by about 1.44 W, about 1.29 W of which was dissipated through the LDO. Figures 10 through 12 detail the hardware test results of the adaptive light dimmer prototype. These results indicate the linear operation of the light dimmer as duty cycle is varied. The efficiency after connecting the microcontroller and LDO was 48.7%, which is well below that presented in [27]. Based on these results, the main function of sensing ambient light levels and dimming appropriately has been achieved by the proposed solution.

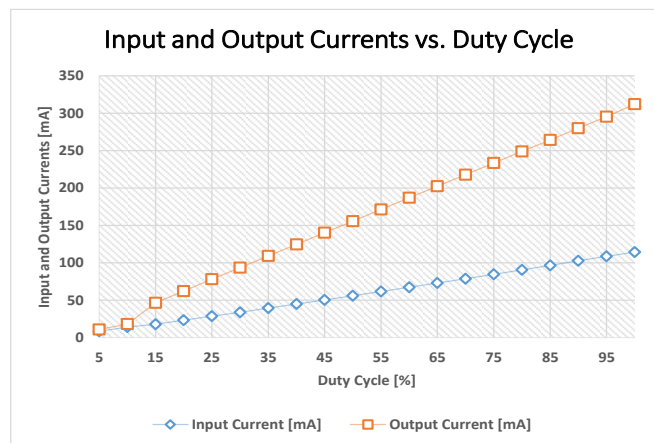


Figure 10. Hardware test results on input and output currents with varying duty cycle

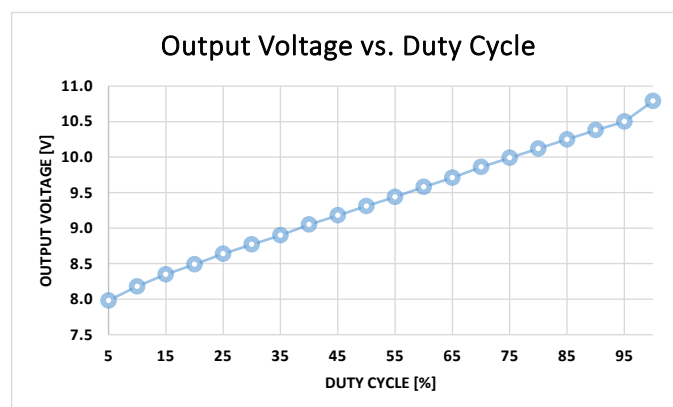


Figure 11. Hardware test results on output voltage with varying duty cycle

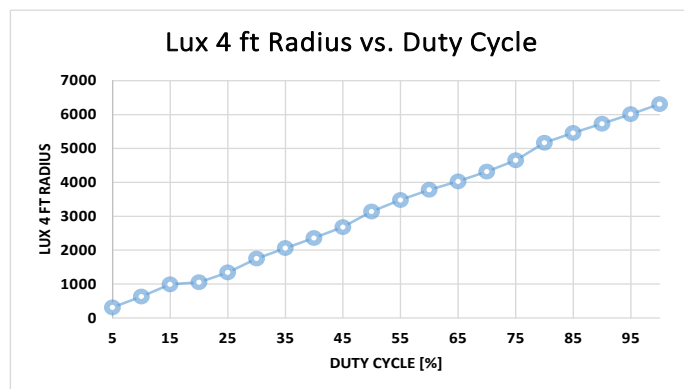


Figure 12. Hardware test results on Lux 4 ft radius with varying duty cycle

There are several ideas to improve the performance of the proposed adaptive light dimmer. One example involves the addition of a $0.47 \mu\text{F}$ LDO output capacitor will be included on the PCB design to ensure that the microcontroller and sensor circuit were receiving a more stable voltage. This capacitor needs to be connected close to the supply of the microcontroller and sensor. The easiest way to do this would be to connect a $0.47 \mu\text{F}$ through-hole ceramic capacitor between the input voltage to the sensor on the PCB and the ground to the sensor on the PCB.

4. Conclusion

An adaptive LED light dimmer which operates automatically based on ambient light condition was presented in this paper. The design has been shown through computer simulation and hardware prototype tests to successfully perform the dimming function following the changing condition of the ambient light. The proposed solution reduces the complexity of previous approaches and it can be adapted to any DC system operating at different DC voltage levels. Further improvements of the proposed solution involves increasing the overall system efficiency. This could be done by utilizing a snubber to the NMOS switch to reduce switching losses at 400 kHz. The PCB design could also be optimized for better signal integrity since many components are farther apart on the current PCB design. Additionally, an alternative to the LDO utilized in the proposed design must be sought to further improve the overall efficiency.

References

- [1] Basu C, et al. Sensor-Based Predictive Modeling for Smart Lighting in Grid-Integrated Buildings. *IEEE Sensors Journal*. 2014; 14(12): 4216-4229.
- [2] Byun J, Hong I, Byongjoo L, Park S. Intelligent household LED lighting system considering energy efficiency and user satisfaction. *IEEE Transactions on Consumer Electronics*. 2013; 59(1): 70-76.
- [3] Huang C, Chi-Han, Wang B, Kang C, Chen J, Jen-Yao C, Chou I. *Energy-saving LED Control Module for Agent-based Micro-Grid Systems*. Proceedings of IEEE International Conference on Consumer Electronics. 2014: 127-128.
- [4] Edwards D. *Energy Saving LED Screw-in-base Bulbs: A Residential Demonstration*. Proceedings of World Energy Engineering Congress. 2014: 1372-1380.
- [5] Kuo J. On LED Luminous Efficacy and Energy Saving Technique in Lighting. *Advanced Materials Research*. 2012; 512-515: 2693-2696.
- [6] Galkin I, Bisenieks L, Suzdalenko A. *Impact of pulse modulation method of LED dimmer for street lighting on its efficiency*. Proceeding of 4th European Education and Research Conference. 2010: 160-164.
- [7] Jain K, Kumar K, Thangappan P, Manikandan K, Magesh P, Ramesh L, Sujatha L. *Lighting electrical energy audit and management in a commercial building*. Proceedings of 2nd International Conference on Intelligent Computing and Applications, 2015: 463-474.
- [8] Bannamas S, Jiraping P. *An intelligent lighting energy management system for commercial and residential buildings*. Proceedings of IEEE Innovative Smart Grid Technologies – Asia. 2015.

- [9] Lowry G. Energy saving claims for lighting controls in commercial buildings. *Energy and Buildings*. 2016; 133: 489-497.
- [10] Kumar A, Kajale A, Kar P, Shareef A, Panda S. *Location-aware smart lighting system for individual visual comfort in buildings*. IEEE 6th Global Conference on Consumer Electronics. 2017: 301-306.
- [11] Xavier N, Kumar A, Panda S. *Design fabrication and testing of smart lighting system*. Proceedings of the Future Technologies Conference. 2016: 763-768.
- [12] Goyal R, Arya L. *Home automation and intelligent light control system using microcontroller*. Proceedings of International Conference on Computing, Communication and Automation. 2017: 997-1000.
- [13] Shu Z. *Design of White Light LED Lighting Control System*. Proceedings of International Conference on Intelligent Transportation, Big Data & Smart City. 2018: 561-563.
- [14] Thet L M, Kumar A, Xavier N, Panda S K. *A smart lighting system using wireless sensor actuator network*. Proceedings of Intelligent Systems Conference. 2017: 217-220.
- [15] Zhou J, Guo H, Bai B, Duan M, Lin C. *Power-white LED dimming detection system based on NC PWM*. Proceedings of the 11th IEEE International Conference on Anti-counterfeiting, Security, and Identification. 2017: 187-190.
- [16] Salmento M L G, Brier R, Amaral J, Diniz L, Albuquerque V M, Soares G M, Braga H A C. *Application of a flyback converter and variable pulse position modulation for visible light communication*. Proceedings of Brazilian Power Electronics Conference. 2017: 1-5.
- [17] Mahadeokar S, Sardeshmukh M. *Energy efficient PWM Dimmable Smart Digital LED driver*. International Conference on Energy Systems and Applications. 2015.
- [18] Martirano L. *A Sample Case of an Advanced Lighting System in a Educational Building*. Proceedings of IEEE Environment and Electrical Engineering Conference. 2014: 46-51.
- [19] Xiao J, Liu C, Mo Y. *Lighting Control and Its Power Management in Railway Passenger Station*. Proceedings of Asia Pacific Power and Energy Engineering Conference. 2009: 1-4.
- [20] Chun S Y, Lee C S. *Applications of Human Motion Tracking: Smart Lighting Control*. Proceedings of IEEE Computer Vision and Pattern Recognition Workshops Conference. 2013: 387-392.
- [21] Wahl F, Milenkovic M, Amft O. *A distributed PIR-based approach for estimating people count in office environments*. Proceedings of IEEE Computational Science and Engineering Conference. 2012: 640-647.
- [22] Miki M, Okunishi R, Matsutani K, Ikegami H, Fujimoto S. *An Intelligent Lighting System with a Seat Management Mechanism*. Proceedings of IEEE Systems, Man, and Cybernetics Conference. 2013: 4571-4576.
- [23] Bai Y W, Ku Y T. Automatic room light intensity detection and control using a microprocessor and light sensors. *IEEE Transactions on Consumer Electronics*. 2008; 54(3): 1173-1176.
- [24] Taufik T. *The DC House project: An alternate solution for rural electrification*. IEEE Global Humanitarian Technology Conference. 2014: 174-179.
- [25] Rohit S, Gunabalanand R, Kumar M P. Pulse Density Modulation Flyback Converter for LED Automotive Lighting. *Indonesian Journal of Electrical Engineering and Computer Science*. 2017; 8(1): 85-91.
- [26] Liu Y, Wang S, Luo Y. *Digital dimming control of CCFL drive system using pulse density modulation technique*. Proceedings of IEEE Regon 10 Annual International Conference TENCON. 2007.
- [27] Hasanah R N, Handari Y D, Soeprapto S, Taufik T. LED-Lamp Design for Renewable Energy-Based DC House Application. *International Journal of Power Electronics and Drive Systems*. 2018; 9(3): 987-996.